



# The Crittenden Press

CCMS homecoming pics | 3A  
Vaught's Views covering UK Sports | 6B

AN INDEPENDENT NEWSPAPER SINCE 1879  
**THURSDAY, NOVEMBER 24, 2016**  
2 SECTIONS / 20 PAGES / VOLUME 135 / NUMBER 19

\$1 NEWS STAND

USPS 138-260 • MARION • KENTUCKY

24/7 BREAKING AND LOCAL NEWS [THE-PRESS.COM](http://the-press.com)



## County hoops rivalry returns

The second annual alumni basketball game between former Crittenden and Livingston County hoopsters is Saturday at Rocket Arena. Doors open at 4 p.m. with tip-off at 5 p.m. Tickets are \$5, but children 3 and under enter free. See Page 8B for more on the friendly hardwood contest.

## Christmas parade entries still taken

Entries are still being accepted for Marion's Christmas parade on Saturday, Dec. 3. It will be a nighttime parade beginning after dark. Entry forms can be found on Facebook by searching for "Crittenden County Chamber of Commerce, Marion, KY" or they can be picked up at the Chamber office inside the Marion Welcome Center. The Chamber is also looking for the ugliest winter or Christmas sweater to be featured in the parade. The winner gets to ride in the parade. To enter, upload your photo to the "Ugly Christmas Sweater Contest" event page on the Chamber's Facebook page. The sweater with the most likes wins.

## Nunn-Switch re-opens to traffic

Nunn-Switch Road in rural Crittenden County has re-opened to traffic. The road has been closed at different points for several weeks for repairs to separate bridges. "The needed repairs to the approaches on both bridges have been completed; however, the approaches will remain gravel until after the winter season to allow for settling prior to asphalt being replaced next spring," said Crittenden County Judge-Executive Perry Newcom.

## Public meetings

- **Crittenden County Extension District Board** will meet at 5:45 p.m. Monday at the Extension office.
- **Crittenden County Middle School SBDM** will meet at 3:15 p.m. Monday in Principal Tom Radivonyk's office.
- **Crittenden-Livingston Water District** will meet at 6 p.m. Monday at the district office in Salem.



facebook.com/TheCrittendenPress  
twitter.com/CrittendenPress  
thePress@the-press.com  
270.965.3191  
Open weekdays 9 am to 5 pm



MEMBER  
Kentucky Press  
Association



0 4 8 7 9 0 8 7 4 3

Contents ©2016, The Crittenden Press Inc.

# Marion council considers sewer plant location

By **DARYL K. TABOR**  
PRESS EDITOR

A two-hour meeting Monday evening raised more questions from Marion City Council members than answers, including concerns over how council meetings are conducted. An engineer hired to oversee construction of the city's new wastewater treatment facility was present at the meeting and had hoped a location for the new plant would be selected in order to keep the job on pace with a strict timeline from Frank-

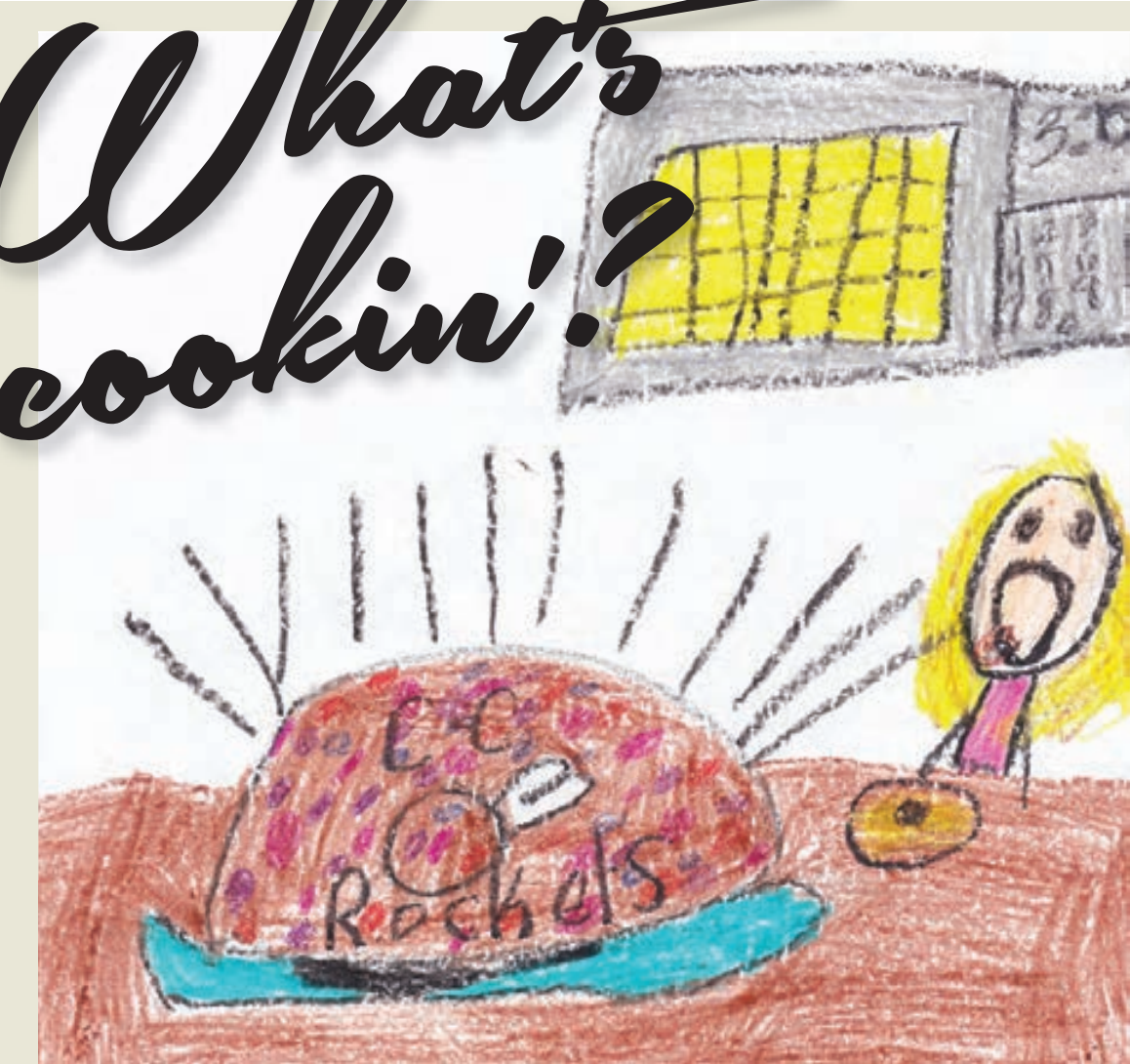
fort. What he left with was a two-week delay in moving forward due to indecision on the best location for the plant. The city is eyeing two properties for the \$8 million project – a parcel it already owns within the incorporated limits and a 15-acre tract in Industrial Park North, just east of town off U.S. 60. Both properties have advantages and disadvantages, said Alan Robinson, president of Eclipse Engineers of Somerset. However, he said the industrial

park is clearly the most feasible location. "The site selection is very important to the project," Robinson told the council. The overall \$12 million system upgrade is being mandated primarily to address environmental violations brought on by the release of untreated sewage into Rush Creek at times when the current plant built in the 1970s is operating above capacity. From January 2010 to January 2015, the city racked up 98 state violations at the wastewater

treatment plant, primarily the result of its age and inadequacies. The engineer said the city-owned land on which the Victory Gardens lie is the most costly and risky route. Part of the land is in a FEMA flood zone like the site of the current plant. An access road for trucking in supplies would have to be built at an estimated cost of \$400,000, and a mechanical aeration system would have to be installed and maintained. Because it lies close to Marion-Crittenden County

Park and amid residences, that location also presents the most potential for an odor nuisance should treatment problems occur. Building the new plant in the industrial park, Robinson said, would eliminate the need for a new road and flood zone concerns. Its higher elevation above Rush Creek makes the site more attractive because a gravity-fed aeration process can be used, eliminating the need for mechanical oxygenation

See **COUNCIL**/Page 3A



DRAWING BY KYNDAL SHOUSE, CCES

The Crittenden Press once again asked 8- and 9-year-olds at Crittenden County Elementary School for their advice on how to cook today's Thanksgiving turkey. One of the most creative recipes came complete with an illustration (above) by Kyndal Shouse, which shows the suggested decoration of "CC Rockets" on the centerpiece of the meal. Shouse stuffs her bird with mashed potatoes and serves it with milk and side dishes of Oreos, pumpkin pie and Keebler cookies with sprinkles.

# Second-graders offer Thanksgiving recipes

STAFF REPORT

The centerpiece of any traditional Thanksgiving meal is, of course, the turkey. Again this year, Crittenden County Elementary School second-graders share their instructions for cooking the bird. Some more non-traditional preparation methods for the customary entree suggested by the 8- and 9-year-olds include stuffing it with mashed potatoes, decorating it with slogans supporting local sports teams or serving it with a side of a variety of cookies. Some would go into the wild like the Pilgrims at the first Thanksgiving and kill their own turkey, while others would just as soon pick up a frozen one from Dollar General. Cooking instructions vary widely, but all seem to understand no one likes a burned bird on the dinner table. Low heat seems to be key in cooking a turkey to a second-grader's tastes. One student suggests a slow roast at 50 degrees for eight hours. Another would double the heat but cut the cooking time to 12 minutes. Despite wide variations and unconventional directions, these young CCES students certainly know how to express themselves. Instructions from a couple dozen children appear here as written in the classroom.

First you buy a raw Turkey from the store. Next you put the raw



What's Thanksgiving without sunshine and music? An unknown second-grade artist at CCES demonstrates the importance of both alongside the holiday turkey they prefer cooked in applesauce and peanut butter.

Turkey in a plastic pan. The you por grease. Then make sure you por the jucie out the plastic pan and the greese too. Then you can put vegetibol if you want. then you put it in the ofin. Then you cut the Turkey. Last you can eat your Turkey you made for your family.

— Sara Medina

First you by the turkey. Second you open the turkey. Third you

warm up the uvin. Finally you cook it but when it is done do not tought it because the pan will be hot.

— Brady

First, you find a pan to put the Turkey meat on. Then, you get the oven more than 100 degrees. Next, you wait for about 12 minuts. Then you put the Turkey into the oven.

See **TURKEY**/Page 12A



# Ban on burning remains in effect

STAFF REPORT

The countywide burning ban enacted last week by Judge-Executive Perry Newcom remains in effect until further notice despite Friday's rain and more forecast at press time for Wednesday. A ban is also in effect for all surrounding counties. "According to forestry, the rain – what little we got – did not affect the drought at all, so the ban will continue," Newcom said Monday. More than a half-inch of rain fell in Marion Friday, but the Kentucky Mesonet climate and weather monitoring station in Rep-ton recorded only 0.41 inches. Only 1.13 inches have fallen on the county since Oct. 1. Because dangerously dry conditions persist, no outdoor burning of any type is allowed in the county until the ban is lifted by Newcom. Wednesday's forecast rains could bring some relief, but it remains to



Newcom

See **BURNING**/Page 3A

# Board of ed OKs laptop for each MS, HS student

STAFF REPORT

All Crittenden County students in the middle and high school will be getting a special Christmas gift from the school system – Chromebooks. At Tuesday's board of education meeting, approval was given to an initiative to put a new laptop in the hands of each child in grades 6-12. The move will put all of those students on equal footing when it comes to advances in 21st century educational opportunities. The district currently has about 160 Chromebooks across the three schools and would need approximately 600 more to equip all students in the top six grades. It cost will the school district \$127,350, but Board Chairman Chris Cook said that's about a third less than what it

See **COMPUTERS**/Page 9A



# Public gets 1st look at new Smithland bridge

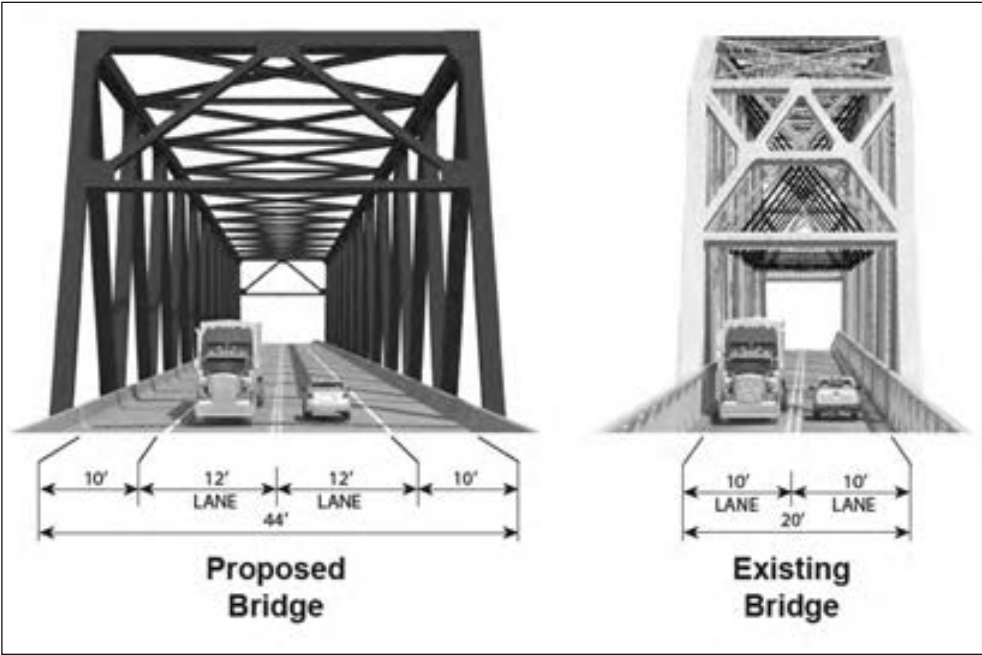
THE PADUCAH SUN

The U.S. 60 Smithland Bridge's days are numbered, and last week, nearly 50 people attended a public meeting to learn about the structure that will replace it.

The historic, 1,817-foot Lucy Jefferson Lewis Memorial Bridge in Livingston County has spanned the Cumberland River since it opened to traffic in 1931. But in a 2013 scoping study, Kentucky Transportation Cabinet officials deemed the bridge functionally obsolete and recommended replacing it with a new one.

The design of the new bridge debuted Nov. 15 at a public meeting that Keith Todd, KyTC public information officer, said 46 people attended. The meeting showcased the proposed replacement bridge and allowed people to leave comments and ask questions.

The bridge is slated for construction just 700 feet downstream from the existing bridge and carries an estimated \$40 million pricetag. The tentative design is a modified Warren truss with a look similar to the new U.S. 60 Tennessee River Bridge at Ledbetter, Todd explained. It will include a 44-foot wide deck – two 12-foot driving lanes, with 10-foot shoulders – as opposed to a 20-foot deck for two lanes on the current bridge. Crews will construct the new bridge so no main piers will be in the river, making it safer for towboats



KENTUCKY TRANSPORTATION CABINET IMAGES

A Kentucky Transportation Cabinet graphic (left) compares the deck and lane widths of the current Cumberland River bridge at Smithland and the proposed span that could be completed as early as 2020. The image above shows the alignment of the proposed bridge compared with the current one.

and helping to avoid barge impact.

The existing bridge, a sister span to the old U.S. 60 Tennessee River crossing in Ledbetter, will remain open while the new bridge and approaches are under construction. In 2012, construction of the new bridge at Ledbetter was expedited to replace the 81-year-old structure in danger of collapse. That bridge opened in 2013. Unlike the new bridge at Ledbetter, the new Cumberland River crossing

will force a relatively minor realignment of U.S. 60.

After the comment period, which ends next week, Todd said officials can move forward with acquiring rights-of-way. He said the construction will affect seven pieces of property, one of which has a house on it.

Construction is tentatively set to begin in fall 2018 and should take two years to complete. Funding is allocated in this year's budget to begin

purchasing rights-of-way in 2017. The remaining project funds, however, are not yet secured.

"I don't think we have a source of funding for actual construction, but the idea here is that we have the money to go ahead and purchase rights-of-way, move utilities and things like that," he said. "So when money is available, we'll be ready to jump in and take off."

Todd said the \$40 million price is

not as high as he anticipated, and he is optimistic the money will be allocated in future transportation budgets, the next of which will be crafted by state lawmakers 2018.

Anyone unable to make it to last week's meeting has until next Wednesday to stop by the KyTC office in Reidland, review the plans and submit comments and questions.

*(Editor's note: The Crittenden Press contributed to this story.)*

## LETTERS

### Korean War sacrifices not forgotten here

To the editor

On. Nov. 13, a few dozen members of the community came together to recognize our county's Korean War veterans. Though the service at the Mapleview Cemetery War Memorial was held to dedicate a granite cross to Junior Raymond "J.R." McDowell, a Crittenden County man killed in the war in 1950, we were proud to honor our surviving Korean War veterans.

The historical society wants to thank American Legion Post 111 for helping with the ceremony and seeing that a cross with McDowell's name now stands for generations to come alongside those with the names of 55 other local men. We especially appreciate Brig. Gen. Scott A. Campbell, a Crittenden County native, for his fitting tribute to the sacrifice of McDowell and all Korean War veterans, and to Clay Stevens for playing "Taps." To the friends and family members of McDowell, we are grateful for you joining us to remember a man almost forgotten to time by his community.

And finally, to our remaining Korean War veterans, whether you served overseas or in a stateside role you were called on to perform, we will not forget your war, your sacrifices and those of your brothers-in-arms who went before you.

**Brenda Underdown**  
chair, Crittenden County Historical Society  
Marion, Ky.

### Sunday New Year's Day for Christians

To the editor

Lest it go unnoticed by some, for Christians, Sunday is New Year's Day.

It is the beginning of a new liturgical year and the start of the Advent season, the countdown to Dec. 25, the day we observe as the birthday of Jesus.

Christian congregations throughout the world, including us at Marion Christian Church, will celebrate the season with special readings and the lighting of candles each Sunday through December.

As we look toward both the start of this liturgical year and, soon, a new calendar year, we would encourage everyone regardless of their faith – or no faith – to join us in our prayer that the acrimony and conflict, both real and political, of this past year can be laid aside and the next year can be one of love, hope and goodwill toward all mankind.

This liturgical holiday follows closely on the heels of Thanksgiving Day, which serves to remind us of the blessings we share. As always, we invite you to celebrate this season – and every Sunday – with us at Marion Christian Church, 211 W. Bellville St. in Marion.

**John Lucas**, board chair,  
Marion Christian Church  
Marion, Ky.

*(Editor's note: Letters to the editor may be mailed, emailed or brought into our office for consideration.)*



PHOTO BY BRENDA FOSTER

## Chess results

Several Crittenden County Blue Knights chess players competed Saturday at the Murray Elementary School Scholastic Chess Tournament at the Curris Center on the campus of Murray State University with teams collecting second-, third and fourth-place trophies. The Crittenden County Middle School team (right) of Cole Swinford (first) and Evan McDowell (12th) placed second in the K-8 division. Taking third in the K-3 division was Klondike Christian Academy (above), a Crittenden County home-schooled team of Paris Foster (sixth in division) and Zoe Foster (24th). The Crittenden County Elementary School team (above right) of Hayden Hildebrand (12th), Marley Phelps (14th) and Abbey Swinford (16th) placed fourth in the K-5 division.



PHOTOS BY DAVID SNOW, MURRAY LEDGER & TIMES (ABOVE, BELOW)



# Turkeys bred only for their meat

It's that time of year when talk turns to turkeys. Technically, there is only one breed of turkey, with several varieties, although many people incorrectly refer to these varieties as breeds.

Turkeys are raised only for meat. They are not raised for egg production, as with chickens, ducks and quail. As a result, turkeys do not produce very many eggs.

The most common type of commercial turkey raised in the United States is the Broad-Breasted White. It has a larger breast than the other varieties of turkeys.

The term "heritage turkeys" refers to naturally mating turkey breeds native to the Americas. These varieties date back to early colonial times. They are Beltville Small White, Bourbon Red, Jersey Buff, Narragansett, Royal Palm, Slate, Standard Bronze and White Holland. Heritage turkeys grow at a much slower rate than Broad-Breasted Whites. The result is a smaller bird but one with a more balanced

dark-to-white meat ratio; a more intense, sometimes gamey flavor; and a thicker layer of fat surrounding the breast.

A young male turkey is called a Jake and a young female is called a Jenny, while a baby turkey is a poult. Older females are called hens and older males are called toms. Adult males are sometimes called gobblers.

Turkeys have brightly colored growths on their throat called caruncles and a flap of skin that hangs over their beak called a snood. They also have a wattle, which is a flap of skin under the beak. You will see all of these things turn bright red when a tom is upset or courting a female.

As turkeys get older it is easier to tell the toms from the hens. Toms are typically larger overall than hens and have larger snoods and caruncles than the females.

There are two species of turkeys, both native to the Americas: the North American (Meleagris gallopavo) and

the Ocellated (Meleagris ocellata) turkey. The North American wild turkey is the species from which all domesticated varieties of turkeys originated. The Ocellated turkey, sometimes called the Mexican turkey, is native to the Yucatan Peninsula of Mexico.

Raising wild turkeys is illegal in some states, including Kentucky. The prohibition includes domestic strains of wild birds. The law is meant to protect native populations.

The wild turkey was first domesticated by the Aztecs. Turkeys provided a source of protein and the feathers were used for decorative purposes. Very little genetic selection was used with these early domesticated turkeys. The explorers took these turkeys back to Europe with them.

After some early genetic selection in Europe, these turkeys were re-introduced into America with the first settlers. While the initial genetic selection of domesticated wild turkeys occurred in Europe, the different varieties were developed in the United States, with the possible exception of the White Holland.

Many options are available for those interested in starting a small flock of turkeys. If

fast growth and good feed efficiency are important, the commercial strains of turkey are your best option. The Midget White, a smaller version of the Broad-Breasted White, is well suited for small farms.

If you are looking at raising heritage turkeys there are several varieties to choose from. The Bourbon Red was developed in Kentucky and is suitable for small flocks.

If you would like to enter your turkeys in poultry shows, purebred varieties are required. Choose one of the eight varieties recognized by the American Poultry Association in their Standard of Perfection. The Royal Palm turkey is primarily an ornamental variety, but any of the other varieties are well suited to the small flock.

For more information about turkeys or other poultry, contact Dee Brasher, Agriculture and Natural Resources Extension Agent at the Crittenden Cooperative Extension Service at (270) 965-5236.

*(Editor's note: Dee Brasher is the agent for Agriculture and Natural Resources with the University of Kentucky Crittenden County Cooperative Extension Service. She can be reached at (270) 965-5236.)*

The Crittenden Press

USPS 138-260

The-Press.com | ThePress@The-Press.com | 270.965.3191

The Crittenden Press Inc. management and staff

Publisher .....Chris Evans

Editor .....Daryl K. Tabor

Advertising manager .....Allison Evans

Operations manager .....Alaina Barnes

The Crittenden Press (USPS 138-260) is published weekly by The Crittenden Press Inc., P.O. Box 191, 125 E. Bellville St., Marion, KY 42064. Periodicals postage paid at Marion, Ky., and at additional mailing offices. Subscriptions are \$32 to \$55 per year. POSTMASTER: Send address changes to The Crittenden Press, P.O. Box 191, Marion, KY 42064.

Copyright 2016

Ten years from now, the newspaper you put in the trash today will still be readable in the landfill that was its final destination. Newsprint is a renewable resource. Recycling bins are located at the county's convenience center on U.S. 60 east of Marion.

KPA KENTUCKY PRESS ASSOCIATION

Blood Drive at Crittenden Health Systems

located in the Education Room on Campus

Monday, Dec. 5 • Noon-5:30p.m.

All blood donors will receive a t-shirt for your blood donation.

Western Kentucky

Regional Blood Center

1902 South Virginia St., Hopkinsville, Ky. 42240

Toll Free (888) 684-9296







NEWS BRIEFS

City utilities director hurt in Friday crash

City of Marion Utilities Director Brian Thomas was seriously injured Friday in a single-vehicle accident on I-69 east of Princeton in Caldwell County.



Thomas, who resides in Dawson Springs, was heading home from work after dark eastbound on the interstate in heavy rainfall when his city-assigned pickup hydroplaned and crashed.

Thomas was ejected from the passenger side window. He was taken to Caldwell Hospital by a passerby and later transferred to Vanderbilt Hospital where he was treated for a broken neck among other injuries. Mayor Mickey Alexander said Thomas is expected to be off work a few weeks. He is expected to make a full recovery.

Friday wreck hurts Murray woman, 20

Kentucky State Police on Friday investigated a single vehicle, injury-collision on U.S. 60 East of Marion. The preliminary investigation revealed Kelly N. Schaeffer, 20, of Murray was operating a 1998 Ford Explorer eastbound on U.S. 60 East in a heavy rain when her vehicle began to hydroplane off onto the left shoulder of the roadway. The vehicle left the roadway and dropped down into the ditch on the north side, causing it to overturn toward the passenger side. The vehicle rolled down the north ditch where it came to final rest facing west-

bound. The driver was the only occupant and was transported by a passerby to Crittenden Health Systems for treatment of injuries sustained in the collision. Crittenden County Rescue Squad and the Marion Police Department assisted with the investigation.

Circuit clerk scaling back hours in 2017

Starting Jan. 1, Crittenden County Circuit Clerk Melissa Guill will be reducing her office hours. After the first of the new year, the office will be open 9 to 11 a.m. only one Saturday per month. Guill said that will be the first Saturday unless weather or holidays close the courthouse. "No matter what, the office will be open one Saturday a month," Guill said in a social media post seeking input from patrons. Until 2017, the office will remain open 9-11 a.m. each Saturday unless affected by a holiday. It will be closed this Saturday, however, due to the Thanksgiving holiday.

Christmas Angel trees up in Marion

Christmas wish lists for children in 64 Crittenden County households are now available at Shopko and Conrad's Harvest Foods. Community Christmas coordinator Cheryl Burks said the number of families participating is down for the third straight year, following implementation of a three educational/enrichment class requirement for participation in the Christmas charity. Three years ago 151 families were registered to receive food and gifts.

Monetary donations can be taken to Farmers Bank or taken or mailed to the Extension office on U.S. 60 East. Paper products can be taken to Marion Baptist Church through Monday, Dec. 5. Community Christmas Distribution will be from 9 a.m. to noon, Friday, Dec. 16 at the Carson G. Davison National Guard Armory. Questions about Community Christmas can be directed to Burks at (270) 965-2248.

Yarbrough finalist for top schools chief

Webster County Superintendent of Schools Dr. Rachel Yarbrough was one of four finalists for 2017 Kentucky Superintendent of the Year. She served as superintendent in Crittenden County from 2008 to 2014. Dr. Henry Webb of Floyd County was announced last week as the winner. A 1985 graduate of Webster County High, Yarbrough holds a bachelor's and doctorate of education from Oakland City University. Her instructional leadership coursework was completed through Western Kentucky University. She was a teacher, guidance counselor, principal and assistant superintendent in Webster County Schools before serving as the superintendent of Crittenden County Schools. Yarbrough is in her third year as superintendent of Webster County Schools. She also serves as the president of the Kentucky Association of School Superintendents and serves on the Kentucky Commissioner of Education's Accountability Steering Committee.

Belt Auction & Realty

MARION / CRITTENDEN COUNTY

COTTAGE...3 BR, 2 BA home in the country. Wood floors, spacious kitchen, storage space in the basement as well. All on 1.41 acres. RENTAL PROPERTY INVESTMENT...3 BR, 2 BA 14x70 mobile home located on quiet street w/all city utilities. Agent Owned. rb TOWN & COUNTRY...3 BR, 1.5 BA brick home. Features: Central heat & air, city utilities, eat-in kitchen, appliances stay w/home, laundry room, garden space, landscaped, paved drive. pa BRICK HOME...3 BR, 2 1/2 BA, LG den w/fireplace, kitchen w/breakfast area, all appliances stay, Master BR w/LG master BA & walk in closet. Study w/a 1/2 bath. Large attached 2 car garage, covered back porch overlooking yard & remaining acreage. Included w/the sale of this home is a shop building w/3 bays, large work area, front of building could be used for commercial/ Retail use, building according to PVA is over 3500 SF. Remaining acreage is wooded & is abundant w/ whitetail deer & wild turkey rh OVERLOOKING THE FAIRWAYS...This beautiful well maintained home sits on 1.12 acres. Features: 4 BR, 3.5 BA, LR, DR, Den w/fireplace, kitchen w/eating area, appliances including the washer/dryer, playroom, enclosed patio & an open patio. Home has wood floors, ceramic tile. Open staircase to the upstairs which has 3 BR upstairs, 2 car attached garage. jy JIM MINE RD...1 BR, 1 BA shop building home. Features: 720 square feet of living space, gas space heaters, window air conditioner. House & 17 acres Contact office for more information. Cs

COMMERCIAL

COURT SQUARE...Approx. 2400 SQ FT of office/Retail Building space w/ rear parking. Bldg. directly across the street from the Court House & several Restaurants, Banks, Attorney's, Retail Shops.. Street Parking. Agent Owned.

SALEM / LIVINGSTON

COZY...This 2 BR, 1 BA bath cottage, would be a great starter home for young couple or retirement home when your ready to downsize, home has central heat/air. Small basement for additional storage, along w/finished bonus room in the attic. 1 car attached garage w/blacktop driveway all sitting on two lots. jh SALEM RENTAL INVESTMENT...2 BR, 1 BA home just on the edge of town. Good starter home or someone that wants to slow down. Call today to set up appointment. Pd \$26,000 GREAT STARTER HOME...2 BR, 2 BA mobile home in Salem. Metal roof and siding, gravel drive, Pier foundation, propane fuel, city utilities, central air, appliances stay with home. cj WATERFRONT HOME...just off the Ohio River in the Carrsville area. Features: Den, Kitchen, bath & utility on main level, w/2 BR & BA upstairs. Large deck w/great views of Deer Creek & back yard, private boat dock. Private boat ramp w/area to store your boat/trailer. Complete w/all appliances, storage buildings. HUNTING LODGE...3 BR, 1.5 BA, home would be perfect for hunters or a family. Features: LR w/large windows to look out at the wildlife, 1 car garage, walk-out basement, wood burning furnace, all on 14 acres. PRICE REDUCED \$40,000.

Check our website for more info and our Home "Visual" Tours @beltrealty.com

We have buyers looking for Residential & farms of all sizes. If you have property that you no longer need or would like to sell, contact us. We have buyers looking for property in Crittenden, Livingston, Caldwell and Lyon Counties.

411 S. MAIN ST.  
MARION, KY 42064  
OFFICE: (270) 965-5271  
FAX: (270) 965-5272

BELT AUCTION-REALTY

Jim DeFreitas - Sales Associate  
(270) 832-0116  
Sharon Belt—Broker (270) 965-2358  
Raymond Belt—Owner / Principle  
Broker / Auctioneer (270) 965-2358



SUBMITTED PHOTO

A trivial pursuit

About 20 people participated Friday evening in the first-ever Trivia Night at Crittenden County Public Library. Six teams enjoyed 10 rounds of questions testing the recall of participants on topics from animals to mythology to crime. In the end, Team Smith comprised of (seated, from left) Gordon Guess, Brian and Michele Hodge and Todd Merrick came away with bragging rights, closely followed by Eat Mo' Pie, the team of (standing) Ken Crider, Rebecca Johnson and Rob Towerly. The library is planning to host a second Trivia Night as early as January.

BURNING

Continued from Page 1A

be seen just how much. Any repeal of the ban will be announced at The Press Online and elsewhere. Violation could result in fines and possibly jail time. Crittenden County remains in Level 1 drought status. Moisture content in the soil is far below normal. Fallen leaves and dead foliage following a killing frost has added fuel to any potential wildfire. No major wildfires have been reported in the county, but one Friday in Livingston County near Burna charred several acres and burned at least one structure. Firefighters from numerous departments, including some in Crittenden County, battled the blaze for several hours Friday afternoon. Crittenden EMS was dispatched to treat a firefighter suffering from exhaustion Fri-

day evening, but was called off before arriving at the scene. No other injuries were reported. Agricultural impact Temperatures this week have been seasonable, but many weeks of above normal temperatures and below normal rainfall have taken their toll. Most of the state is now in a severe drought according to the U.S. Drought Monitor. Friday's rain had little impact on reversing drought deficits. According to the USDA's

National Agricultural Statistics Service, only 22 percent of topsoil and 24 percent of subsoil has adequate moisture. Soil and pasture conditions still remain very dry. Only 44 percent of pastures are in fair to excellent condition. Many cattle farmers are concerned about hay supplies through the winter, as drought conditions forced early feeding. Nearly all winter wheat has been seeded and 77 percent has emerged, but despite the severe drought, 79 percent of the crop is fair to excellent.

Next Class Dec. 3 Call to enroll

Instructors

West Kentucky Defense, LLC

WestKentuckyDefense@gmail.com

(270)860-2005 13057 US Hwy 60 West (270)969-0456 Corydon, Kentucky

David & Phyllis Buchanan

CCOW

The Black Friday SALE

Up to SIXTY MONTHS No Interest Financing With Min Purchase & WAC

Sofa \$799<sup>99</sup> Loveseat \$749<sup>99</sup>

Sofa \$699<sup>99</sup> Chair 1/2 \$599<sup>99</sup>

Sleep Better! Pay Less! Quality Mattresses at Once-A-Year Low Prices

TEMPUR-PEDIC

4 Piece Black Stainless Kitchen \$2546 (After \$300 instant rebate) SAVE \$1650 OFF MSRP!

Whirlpool \$999 Top Load High Efficiency Laundry Pair WTW7300DW • WED73000W MSRP \$899 EACH

4.8 cu. ft. w/ Steam Clean Option 7.0 cu. ft.

25.4 cu. ft.

Furniture • Bedding • Electronics • Appliances

King's GREAT BUYS PLUS

1141 S Main St, Madisonville • 755 US 62, Princeton

STORE HOURS: M-F 8-6 • Sat 8-5  
Madisonville: Appliances/Electronics 270-821-0516  
Furniture 270-643-0041 • Princeton: 270-365-3288

f

SHOP SMALL

THINK SMALL! Shop locally this Saturday

SMALL BUSINESS SATURDAY



### Parade dates set in area towns

Parades in Marion, Salem and Fredonia are scheduled for the next three weekends. Below is a list of dates, times and the phone number to contact to register an entry:

- City of Marion 5 p.m., Dec. 3. Contact Shelly Davidson at (270) 965-2239.
- City of Salem 5:30 p.m., Dec. 10. Call City Hall at (270) 988-2600.
- City of Fredonia, 6:30 p.m., Dec. 16. Call Michelle Travis at (270) 625-6936.

### Shelter hosts Santa event

The Mary Hall Rudiman animal shelter will host Breakfast with Santa and photos with pets from 8 a.m.-noon, Dec. 10 at the Woman's Club Building on east Carlisle Street in Marion. Children are invited to a pancake breakfast between 8-11 a.m., followed by pictures with Mr. and Mrs. Claus from 11 a.m.-noon. Pets are welcome for photos. Admission is \$10.

### Historical group meets Dec. 1

Caldwell County Historical Society will meet at 7 p.m., Dec. 1 at the George Coon Public Library. There will be no speaker, but the group will be holding its election of officers for the coming year. Slated for discussion will also be the upcoming Bicentennial of Princeton, the eclipse and various other plans for next year. This will be a potluck meal, so all members are asked to bring a platter of their favorite Christmas finger foods. Dues for 2017 will be accepted at the meeting.

### Extension events

- 4-H **Poinsettia pick-up** will be 10 a.m.-1 p.m., Saturday and again between 8 a.m.-4:30 p.m., Nov. 28, at the Extension Annex. All poinsettias **MUST** be picked up by 4:30 p.m., Nov. 28.
- The **Quilt Club** in Crittenden County will meet at 9:30 a.m., Monday at the Extension Office. Debbie Cox will be teaching the group how to make a Fold 'n Stitch wreath! Group is open to anyone, beginner through advanced. Call the Extension Office for more information at (270) 965-5236.
- 4-H **Jr. Beekeepers** will meet 5:30 p.m., Nov. 29 at the Extension Annex. Anyone interested in joining this group, please call the Extension Office at (270) 965-5236.

### Senior Menu

Crittenden County Senior Citizens Center is open weekdays 8 a.m. to 4 p.m. Lunch is served at 11:30 a.m. each day and is \$3 for those 60 and older or \$5 for those under 60. Milk, coffee or tea is available each day. Reservations are requested by 9 a.m. Upcoming activities and menu include:

The center is closed Nov. 24-25 for Thanksgiving.

Monday: Menu is Sweet & Sour Chicken, brown rice, seasoned peas, seasoned cabbage, chocolate pudding, fortune cookie. Ladies exercise by Full Body Fitness Studio begins at 9:45 a.m.

Tuesday: Menu is Sloppy Joe on whole wheat bun, hash-brown casserole, baked pork 'n beans, baked apples, raisins. Lunch and a movie in Paducah is planned. Call the center for more details.

Wednesday: Menu is Italian Chicken Breast, stewed potatoes, broccoli soup, peas, whole wheat roll and crackers. Bingo begins at 10:30 a.m.

Every day, the center at 210 N. Walker St. in Marion offers billiards, card games, Wii games and the use of exercise equipment.

Call (270) 965-5229 for more information. The center is a service of Pennyrile Allied Community Services. Aging Coordinator Jenny Sosh is director of the center.

**Submit your calendar item**

Community calendar is designed for individuals, non-profit organizations and government entities to publicize meetings and events that may be of interest to the community. The Crittenden Press reserves the right edit or reject any announcement. To submit your item, call (270) 965-3191, email [pressnews@the-press.com](mailto:pressnews@the-press.com) or stop by our office at 125 E. Bellville St.

## Brooks Legion’s Veteran of the Month

STAFF REPORT

American Legion Auxiliary Unit 217 of Burna recognized several veterans in the area at Post 217 in Burna on Veterans Day. One in particular was World War II veteran Guthrie G. Brooks, who was selected as Veteran of the Month.

Brooks was born on Sept. 15, 1924 in Crittenden County and lived both in the Hurricane area and later near Lola as a child. Many remember Brooks as a very good baseball player. He played with the Lola team until the age of 16 when he left school and moved to Michigan.

A friend had described the beauty of the Michigan area, so he decided to move there and get a job. He was able to obtain a permit to work and worked at Port Huron until he moved to Detroit at the age of 17.

Brooks volunteered and enlisted in the Army Air Corp on Nov. 24, 1942. He spent three years overseas and six more in the reserves when he returned to the states. He received training in Florida in 1942 with additional training at Tidsworth Barracks in England in the 69th

Infantry Division.

It was in 1943 that he arrived in Liverpool, England. He remained there until the D-Day invasion of Normandy on June 6, 1944.

“His stories are both fascinating and horrifying as he describes the bombers flying overhead,” said Faye Gibson of American Legion Auxiliary Unit 217.

He and others with him experienced the fighting, cold and hunger.

“There was tremendous bloodshed and sadness as we hope to never witness again,” Gibson said. “For those who never have experienced such a war as World War II, it is hard to picture what must have been witnessed by Guthrie.”

He traveled through France and ended the push through Europe at



Brooks, 1945

Bach, Germany. It was there Brooks and his unit waited to link up with the Russian Army. He was then to go to Japan, but with the dropping of the atomic bombs that ended World War II, he once again returned to Germany. He was later sent back to the United States by ship.

After returning to the states, Brooks completed his high school education.

“To many of us, he had lived a lifetime before getting that diploma,” Gibson said.

He married his wife Katherine on May 6, 1949. In 1950 they had two children, Brenda and Denice. He and his wife currently live in Lola.

Brooks works hard even today. During his career, he worked in Evansville, Chicago, St. Louis and Calvert City for 25 years. He retired at the age of 70 and continued farming and raising cattle.

“It was with great pride that we were able to recognize Guthrie Brooks as Veteran of the Month of November 2016,” Gibson said. “We all thank him for his service to our great country.”



Guthrie Brooks (left) is pictured with VFW member Tom Gibson on Veterans Day.



SUBMITTED PHOTO

### Principal makes good on attendance reward

Crittenden County Elementary Principal Melissa Tabor was taped to the wall Friday by her elementary school students as a reward for high attendance. Tabor issued a challenge to students that if the school eclipsed 98-percent attendance for any day, she would let them stick her to the wall.



### Speech finalists

Three Crittenden County High School students were finalists at the Larry A. England Invitational Speech Tournament Nov. 19 at Calloway County High School. Pictured (from left) are Ashleigh Dunkerson, fourth in Broadcast Announcing; Anzie Gobin, fifth in Original Oratory; and Ellie McGowan, third in Original Oratory.



### Dental services prevent absences

Crittenden County's visiting school dental program provided services to 185 students at Crittenden Elementary Oct. 25-Nov. 5. Based on the number of students receiving services, school officials say it prevented 388 days that would otherwise have been missed by making multiple trips to the dentist, thus missing valuable instruction time. The fall trip was the Big Smiles employees' fourth visit, and they will return in April. From left are Candance Flener of Murray, Cyndi Jones of Hopkinsville and Shelly Anderson of Union City, Tenn. Guidance counselor Laura Poindexter said the Big Smiles program has been a great asset to CCES and its students.

CAPITOL  
Cinemas

Starts Friday, Nov. 25

Walt Disney's  
Moana

PG

Fri. 4, 6:45, 9:15  
Sat. 1:30, 4, 6:45, 9:15  
Sun. 1:30, 4, 6:45  
Mon.-Thurs. 6:30

Brad Pitt Stars in 1942 War Time Thriller  
Allied

R

Fri. 4, 6:40, 9:15  
Sat. 1:30, 4:05, 6:40, 9:15  
Sun. 1:30, 4:05, 6:45  
Mon.-Thurs. 6:30

Still Nation's #1 Box Office Movie  
Harry Potter Prequel  
Fantastic Beasts & Where to Find Them

PG-13

Fri. 4, 6:40, 9:15  
Sat. 1:30, 4:05, 6:40, 9:15  
Sun. 1:30, 4:05, 6:45  
Mon.-Thurs. 6:30

Lowest Price In First-Run Movies  
203 W. Main St. • Princeton, KY

Help Us Celebrate

Ethel Tucker's 99th Birthday

All Friends & Family are invited to stop by between 2-4 p.m., Sunday, Nov. 27th at her home at 319 South Main Street, Marion

In lieu of gifts and cards, please make contributions to Community Christmas.

She will have copies of both From "Pilot Knob to Main Street" and "Tea Time of Life" available for purchase and to be signed.

Fohs Hall

HISTORIC ELEGANT

Marion's most historic landmark has undergone major renovations to make it the premiere special event and reception venue in the region.

RE-SANDED HARDWOOD FLOORS

NEWLY PAINTED AUDITORIUM

STAGE RESTORATION & CURTAIN

BATHROOM UPGRADES

Wedding Receptions

Banquets

Anniversary & Birthday Parties

Organizational Meetings

\*Rental rates for 2015: \*Does not include extra fees for set ups, food surcharges, etc.

Auditorium ..... \$200

Upstairs ..... \$125

Basement ..... \$125

Nunn Room (parlor) ..... \$100

For further information call Shyral Estes at 704-1068.

You can also e-mail [shyralestes@yahoo.com](mailto:shyralestes@yahoo.com).

Ad paid for by Marion Tourism Commission



NOTICE

Notice is hereby given that, in a November 23, 2016 Application, Kentucky Utilities Company is seeking approval by the Public Service Commission of an adjustment of electric rates and charges proposed to become effective on and after January 1, 2017.

KU CURRENT AND PROPOSED ELECTRIC RATES

Residential Service - Rate RS		
	Current	Proposed
Basic Service Charge per Month:	\$10.75	\$22.00
Plus an Energy Charge per kWh:	\$ 0.08870	
Infrastructure		\$ 0.05015
Variable		\$ 0.03508
Total		\$ 0.08523

Residential Time-of-Day Energy Service - Rate RTOD-Energy		
	Current	Proposed
Basic Service Charge per Month:	\$10.75	\$22.00
Plus an Energy Charge per kWh:		
Off-Peak Hours	\$ 0.05740	\$0.05266
On-Peak Hours	\$ 0.27646	\$0.27646

Residential Time-of-Day Demand Service - Rate RTOD-Demand		
Current		
Basic Service Charge per Month:		\$10.75
Plus an Energy Charge per kWh:		\$ 0.04370
Plus a Demand Charge per kW:		
Off-Peak Hours		\$ 3.70
On-Peak Hours		\$13.05
Proposed		
Basic Service Charge per Month:		\$22.00
Plus an Energy Charge per kWh:		\$ 0.03508
Plus a Demand Charge per kW:		
Base Hours		\$ 3.44
Peak Hours		\$ 7.87

**Determination of Pricing Periods:**  
**Current**  
Pricing periods are established in Eastern Standard Time year round by season for weekdays and week-ends. The hours of the pricing periods for the price levels are as follows:  
Summer Months of April through October  
Weekdays: Off Peak (5pm-1pm), On Peak (1pm-5pm)  
Weekends: Off Peak (All Hours), On Peak (N/A)  
All Other Months of November continuously through March  
Weekdays: Off Peak (11am-7am), On Peak (7am-11am)  
Weekends: Off Peak (All Hours), On Peak (N/A)  
**Proposed**  
Pricing periods are established in Eastern Standard Time year round by season for weekdays and week-ends. The hours of the pricing periods for the price levels are as follows:  
Summer Months of April through October  
Weekdays: Base (All Hours), Peak (1pm-5pm)  
Weekends: Base (All Hours), Peak (N/A)  
All Other Months of November continuously through March  
Weekdays: Base (All Hours), Peak (7am-11am)  
Weekends: Base (All Hours), Peak (N/A)

Volunteer Fire Department Service - Rate VFD		
	Current	Proposed
Basic Service Charge per Month:	\$10.75	\$22.00
Plus an Energy Charge per kWh:	\$ 0.08870	
Infrastructure		\$ 0.05015
Variable		\$ 0.03508
Total		\$ 0.08523

General Service – Rate GS		
Single Phase	Current	Proposed
Basic Service Charge per Month	\$25.00	\$31.50
Plus an Energy Charge per kWh	\$ 0.10426	
Infrastructure		\$ 0.07137
Variable		\$ 0.03548
Total		\$ 0.10685
Three Phase		
Basic Service Charge per Month	\$40.00	\$50.40
Plus an Energy Charge per kWh	\$ 0.10426	
Infrastructure		\$ 0.07137
Variable		\$ 0.03548
Total		\$ 0.10685

**Proposed**  
**Determination of Load**  
Service hereunder will be metered except when, by mutual agreement of Company and Customer, an unmetered installation will be more satisfactory from the standpoint of both parties. In the case of unmetered service, billing will be based on a calculated consumption taking into account the types of equipment served.

All Electric School – Rate AES		
Single Phase	Current	Proposed
Basic Service Charge per Month	\$25.00	\$85.00
Plus an Energy Charge per kWh	\$ 0.08369	
Infrastructure		\$ 0.04996
Variable		\$ 0.03523
Total		\$ 0.08519
Three Phase		
Basic Service Charge per Month	\$40.00	\$140.00
Plus an Energy Charge per kWh	\$ 0.08369	
Infrastructure		\$ 0.04996
Variable		\$ 0.03523
Total		\$ 0.08519

Power Service – Rate PS		
Secondary Service	Current	Proposed
Basic Service Charge per Month	\$90.00	\$90.00
Plus an Energy Charge per kWh	\$ 0.03572	\$ 0.03572
Plus a Demand Charge per kW per month of billing demand		
Summer Rate (May through September)	\$19.05	\$20.71
Winter Rate (All Other Months)	\$16.95	\$18.43
Primary Service	Current	Proposed
Basic Service Charge per Month	\$200.00	\$240.00
Plus an Energy Charge per kWh	\$ 0.03446	\$ 0.03472
Plus a Demand Charge per kW per month of billing demand		
Summer Rate (May through September)	\$ 19.51	\$ 20.78
Winter Rate (All Other Months)	\$ 17.41	\$ 18.54

**Current**  
Where the monthly billing demand is the greater of:  
a) the maximum measured load in the current billing period but not less than 50 kW for secondary service or 25 kW for primary service, or  
b) a minimum of 50% of the highest billing demand in the preceding eleven (11) monthly billing periods, or  
c) a minimum of 60% of the contract capacity based on the maximum load expected on the system or on facilities specified by Customer.  
**Proposed**  
Where the monthly billing demand is the greater of:  
a) the maximum measured load in the current billing period but not less than 50 kW for secondary service or 25 kW for primary service, or  
b) a minimum of 50% of the highest measured load in the preceding eleven (11) monthly billing periods, or  
c) if applicable, a minimum of 60% of the contract capacity based on the maximum load expected on the system or on facilities specified by Customer.

Time-of-Day Secondary Service - Rate TODS		
	Current	Proposed
Basic Service Charge per Month	\$200.00	\$200.00
Plus an Energy Charge per kWh	\$ 0.03527	\$ 0.03531
Plus a Maximum Load Charge per kW per month		
Peak Demand Period	\$ 6.13	\$ 7.81
Intermediate Demand Period	\$ 4.53	\$ 6.11
Base Demand Period	\$ 5.20	\$ 3.24

**Current**  
Where:  
the monthly billing demand for the Peak and Intermediate Demand Periods is the greater of:  
a) the maximum measured load in the current billing period, or  
b) a minimum of 50% of the highest billing demand in the preceding eleven (11) monthly billing periods, and  
the monthly billing demand for the Base Demand Period is the greater of:  
a) the maximum measured load in the current billing period but not less than 250 kW, or  
b) a minimum of 75% of the highest billing demand in the preceding eleven (11) monthly billing periods, or  
c) a minimum of 75% of the contract capacity based on the maximum load expected on the system or on facilities specified by Customer.  
**Proposed**  
Where:  
the monthly billing demand for the Peak and Intermediate Demand Periods is the greater of:

a) the maximum measured load in the current billing period, or  
b) a minimum of 50% of the highest measured load in the preceding eleven (11) monthly billing periods, and  
the monthly billing demand for the Base Demand Period is the greater of:  
a) the maximum measured load in the current billing period but not less than 250 kW, or  
b) the highest measured load in the preceding eleven (11) monthly billing periods, or  
c) the contract capacity based on the maximum load expected on the system or on facilities specified by Customer.

Time-of-Day Primary Service - Rate TODP		
	Current	Proposed
Basic Service Charge per Month	\$300.00	\$330.00
Plus an Energy Charge per kWh	\$ 0.03432	\$ 0.03433
Plus a Maximum Load Charge per kVA per month		
Peak Demand Period	\$ 5.89	\$ 6.83
Intermediate Demand Period	\$ 4.39	\$ 5.34
Base Demand Period	\$ 3.34	\$ 2.92

**Current**  
Where:  
the monthly billing demand for the Peak and Intermediate Demand Periods is the greater of:  
a) the maximum measured load in the current billing period, or  
b) a minimum of 50% of the highest billing demand in the preceding eleven (11) monthly billing periods, and  
the monthly billing demand for the Base Demand Period is the greater of:  
a) the maximum measured load in the current billing period but not less than 250 kVA, or  
b) a minimum of 75% of the highest billing demand in the preceding eleven (11) monthly billing periods, or  
c) a minimum of 75% of the contract capacity based on the maximum load expected on the system or on facilities specified by Customer.  
**Proposed**  
Where:  
the monthly billing demand for the Peak and Intermediate Demand Periods is the greater of:  
a)the maximum measured load in the current billing period, or  
b)a minimum of 50% of the highest measured load in the preceding eleven (11) monthly billing periods, and  
the monthly billing demand for the Base Demand Period is the greater of:  
a)the maximum measured load in the current billing period but not less than 250 kVA, or  
b)the highest measured load in the preceding eleven (11) monthly billing periods, or  
c)the contract capacity based on the maximum load expected on the system or on facilities specified by Customer.

Retail Transmission Service - Rate RTS		
	Current	Proposed
Basic Service Charge per Month	\$1,000.00	\$1,400.00
Plus an Energy Charge per kWh	\$ 0.03357	\$ 0.03363
Plus a Maximum Load Charge per kVA per month		
Peak Demand Period	\$ 4.73	\$ 6.72
Intermediate Demand Period	\$ 4.63	\$ 5.26
Base Demand Period	\$ 3.10	\$ 2.12

**Current**  
Where:  
the monthly billing demand for the Peak and Intermediate Demand Periods is the greater of:  
a) the maximum measured load in the current billing period, or  
b) a minimum of 50% of the highest billing demand in the preceding eleven (11) monthly billing periods, and  
the monthly billing demand for the Base Demand Period is the greater of:  
a) the maximum measured load in the current billing period but not less than 250 kVA, or  
b) a minimum of 75% of the highest billing demand in the preceding eleven (11) monthly billing periods, or  
c) a minimum of 75% of the contract capacity based on the maximum load expected on the system or on facilities specified by Customer.  
**Proposed**  
Where:  
the monthly billing demand for the Peak and Intermediate Demand Periods is the greater of:  
a) the maximum measured load in the current billing period, or  
b) a minimum of 50% of the highest measured load in the preceding eleven (11) monthly billing periods, and  
the monthly billing demand for the Base Demand Period is the greater of:  
a) the maximum measured load in the current billing period but not less than 250 kVA, or  
b) the highest measured load in the preceding eleven (11) monthly billing periods, or  
c) the contract capacity based on the maximum load expected on the system or on facilities specified by Customer.

Fluctuating Load Service – Rate FLS		
Primary Service	Current	Proposed
Basic Service Charge per Month	\$1,000.00	\$ 330.00
Plus an Energy Charge per kWh	\$ 0.03643	\$ 0.03433
Plus a Maximum Load Charge per kVA per month		
Peak Demand Period	\$ 3.01	\$ 6.27
Intermediate Demand Period	\$ 2.12	\$ 4.76
Base Demand Period	\$ 2.17	\$ 2.60

Transmission Service		
	Current	Proposed
Basic Service Charge per Month	\$1,000.00	\$1,500.00
Plus an Energy Charge per kWh	\$ 0.03344	\$ 0.03344
Plus a Maximum Load Charge per kVA per month		
Peak Demand Period	\$ 3.01	\$ 3.51
Intermediate Demand Period	\$ 2.12	\$ 2.47
Base Demand Period	\$ 1.42	\$ 1.65

**Current**  
Where:  
the monthly billing demand for the Peak and Intermediate Demand Periods is the greater of:  
a) the maximum measured load in the current billing period, or  
b) a minimum of 50% of the highest billing demand in the preceding eleven (11) monthly billing periods, and  
the monthly billing demand for the Base Demand Period is the greater of:  
a) the maximum measured load in the current billing period but not less than 20,000 kVA, or  
b) a minimum of 75% of the highest billing demand in the preceding eleven (11) monthly billing periods, or  
c) a minimum of 75% of the contract capacity based on the maximum load expected on the system or on facilities specified by Customer.  
**Proposed**  
Where:  
the monthly billing demand for the Peak and Intermediate Demand Periods is the greater of:  
a) the maximum measured load in the current billing period, or  
b) a minimum of 50% of the highest measured load in the preceding eleven (11) monthly billing periods, and  
the monthly billing demand for the Base Demand Period is the greater of:  
a) the maximum measured load in the current billing period but not less than 20,000 kVA, or  
b) the highest measured load in the preceding eleven (11) monthly billing periods, or  
c) the contract capacity based on the maximum load expected on the system or on facilities specified by Customer.

Lighting Service - Rate LS		
Rate Per Light Per Month		
OVERHEAD SERVICE	Current	Proposed
High Pressure Sodium		
462 Cobra Head – 5,800 Lumen – Fixture Only	\$ 9.86	\$ 9.86
472 Cobra Head – 5,800 Lumen – Ornamental	\$13.04	\$15.65
463 Cobra Head – 9,500 Lumen – Fixture Only	\$10.28	\$10.79
473 Cobra Head – 9,500 Lumen – Ornamental	\$13.70	\$16.44
464 Cobra Head – 22,000 Lumen – Fixture Only*	\$16.08	\$16.08
474 Cobra Head – 22,000 Lumen – Ornamental*	\$19.50	\$23.40
465 Cobra Head – 50,000 Lumen – Fixture Only*	\$25.61	\$25.61
475 Cobra Head – 50,000 Lumen – Ornamental*	\$27.37	\$32.84
487 Directional – 9,500 Lumen – Fixture Only	\$10.13	\$10.44
488 Directional – 22,000 Lumen – Fixture Only*	\$15.42	\$15.42
489 Directional – 50,000 Lumen – Fixture Only*	\$21.95	\$21.95
428 Open Bottom – 9,500 Lumen – Fixture Only	\$ 8.87	\$ 8.87
Metal Halide		
450 Directional – 12,000 Lumen – Fixture Only	\$16.13	Move to RLS
451 Directional – 32,000 Lumen – Fixture Only	\$22.80	\$22.80
452 Directional – 107,800 Lumen – Fixture Only	\$47.70	Move to RLS
Light Emitting Diode (LED)		
390 Cobra Head – 8,179 Lumen – Fixture Only	N/A	\$15.21
391 Cobra Head – 14,166 Lumen – Fixture Only*	N/A	\$18.42
392 Cobra Head – 23,214 Lumen – Fixture Only*	N/A	\$28.09
393 Open Bottom – 5,007 Lumen – Fixture Only	N/A	\$10.13

Rate Per Light Per Month		
UNDERGROUND SERVICE	Current	Proposed
High Pressure Sodium		
467 Colonial – 5,800 Lumen – Decorative	\$12.14	\$14.57
468 Colonial – 9,500 Lumen – Decorative	\$12.46	\$14.95
401 Acorn – 5,800 Lumen – Smooth Pole	\$16.57	\$19.88
411 Acorn – 5,800 Lumen – Fluted Pole	\$23.63	\$28.36
420 Acorn – 9,500 Lumen – Smooth Pole	\$17.01	\$20.41
430 Acorn – 9,500 Lumen – Fluted Pole	\$24.20	\$29.04
414 Victorian 5,800 Lumen – Fluted Pole	\$33.87	\$36.70
415 Victorian 9,500 Lumen – Fluted Pole	\$34.19	\$37.46
476 Contemporary – 5,800 Lumen – Fixture/Pole	\$18.66	\$22.39
492 Contemporary – 5,800 Lumen – 2nd Fixture	\$17.12	\$17.12

Continued from previous page

477 Contemporary – 9,500 Lumen – Fixture/Pole	\$23.09	\$27.71
497 Contemporary – 9,500 Lumen – 2nd Fixture	\$17.00	\$17.00
478 Contemporary– 22,000 Lumen – Fixture/Pole*	\$29.73	\$35.68
498 Contemporary– 22,000 Lumen – 2nd Fixture*	\$19.84	\$19.84
479 Contemporary– 50,000 Lumen – Fixture/Pole*	\$36.74	\$42.55
499 Contemporary– 50,000 Lumen – 2nd Fixture*	\$24.15	\$24.15
300 Dark Sky – 4,000 Lumen	\$24.72	\$26.46
301 Dark Sky – 9,500 Lumen	\$25.83	\$28.18
<b>Metal Halide</b>		
490 Contemporary – 12,000 Lumen – Fixture Only	\$17.45	Move to RLS
494 Contemporary – 12,000 Lumen – Smooth Pole	\$31.42	Move to RLS
491 Contemporary – 32,000 Lumen – Fixture Only	\$24.68	\$24.68
495 Contemporary – 32,000 Lumen – Smooth Pole	\$38.64	\$41.06
493 Contemporary – 107,800 Lumen – Fixture Only	\$51.32	Move to RLS
496 Contemporary – 107,800 Lumen – Smooth Pole	\$65.28	Move to RLS
<b>Light Emitting Diode (LED)</b>		
396 Cobra Head – 8,179 Lumen – Fixture/Pole	N/A	\$36.27
397 Cobra Head – 14,166 Lumen – Fixture/Pole*	N/A	\$39.47
398 Cobra Head – 23,214 Lumen – Fixture/Pole*	N/A	\$49.15
399 Colonial, 4Sided – 5,665 Lumen – Fixture/Pole	N/A	\$38.32

**Restricted Lighting Service - Rate RLS**

**Availability of Service:**

**Current**

Service under this rate schedule is restricted to those lighting fixtures/poles in service as of January 1, 2013, except where a spot replacement maintains the continuity of multiple fixtures/poles comprising a neighborhood lighting system or continuity is desired for a subdivision being developed in phases. Spot placement of restricted fixtures/poles is contingent on the restricted fixtures/poles being available from manufacturers. Spot replacement of restricted units will be made under the terms and conditions provided for under non-restricted Lighting Service Rate LS.

In the event restricted fixtures/poles fail and replacements are unavailable, Customer will be given the choice of having Company remove the failed fixture/pole or replacing the failed fixture/pole with other available fixture/pole.

**Proposed**

Service under this rate schedule is restricted to those lighting fixtures/poles in service as of January 1, 2013, except where a spot replacement maintains the continuity of multiple fixtures/poles composing a neighborhood lighting system or continuity is desired for a subdivision being developed in phases. Spot placement of restricted fixtures/poles is contingent on the restricted fixtures/poles being available from manufacturers. Spot replacement of restricted units will be made under the terms and conditions provided for under non-restricted Lighting Service Rate LS. Spot replacements will not be available for Mercury Vapor and Incandescent rate codes.

In the event restricted fixtures/poles fail and replacements are unavailable, Customer will be given the choice of having Company remove the failed fixture/pole or replacing the failed fixture/pole with other available fixture/pole.

Units marked with an asterisk (\*) are not available for use in residential neighborhoods except by municipal authorities.

	<b>Rate Per Light Per Month</b>	
	<b>Current</b>	<b>Proposed</b>
<b>OVERHEAD SERVICE</b>		
<b>High Pressure Sodium</b>		
461 Cobra Head – 4,000 Lumen – Fixture Only	\$ 8.53	\$10.07
471 Cobra Head – 4,000 Lumen – Fixture & Pole	\$11.73	\$14.08
409 Cobra Head – 50,000 Lumen – Fixture Only*	\$13.56	\$16.27
426 Open Bottom – 5,800 Lumen – Fixture Only	\$ 8.54	\$ 8.54
<b>Metal Halide</b>		
450 Directional – 12,000 Lumen – Fixture Only	Moved from LS	\$16.13
454 Directional – 12,000 Lumen – Flood Fixture & Pole	\$20.89	\$20.89
455 Directional – 32,000 Lumen – Flood Fixture & Pole*	\$27.56	\$27.56
452 Directional – 107,800 Lumen – Fixture Only*	Moved from LS	\$47.70
459 Directional – 107,800 Lumen – Flood Fixture & Pole*	\$52.45	\$52.45
<b>Mercury Vapor</b>		
446 Cobra Head – 7,000 Lumen – Fixture Only	\$10.77	\$11.09
456 Cobra Head – 7,000 Lumen – Fixture & Pole	\$13.27	\$14.01
447 Cobra Head – 10,000 Lumen – Fixture Only	\$12.77	\$13.49
457 Cobra Head – 10,000 Lumen – Fixture & Pole	\$14.98	\$15.82
448 Cobra Head – 20,000 Lumen – Fixture Only	\$14.45	\$14.88
458 Cobra Head – 20,000 Lumen – Fixture & Pole	\$16.91	\$17.86
404 Open Bottom – 7,000 Lumen – Fixture Only	\$11.87	\$11.87
<b>Incandescent</b>		
421 Tear Drop – 1,000 Lumen – Fixture Only	\$ 3.81	\$ 3.81
422 Tear Drop – 2,500 Lumen – Fixture Only	\$ 5.11	\$ 5.11
424 Tear Drop – 4,000 Lumen – Fixture Only	\$ 7.63	\$ 7.63
434 Tear Drop – 4,000 Lumen – Fixture & Pole	\$ 8.67	Eliminated
425 Tear Drop – 6,000 Lumen – Fixture Only	\$10.19	\$10.19

	<b>Rate Per Light Per Month</b>	
	<b>Current</b>	<b>Proposed</b>
<b>UNDERGROUND SERVICE</b>		
<b>Metal Halide</b>		
460 Direct – 12,000 Lumen – Flood Fixture & Pole	\$30.10	\$35.23
469 Direct – 32,000 Lumen – Flood Fixture & Pole*	\$36.77	\$39.76
470 Direct – 107,800 Lumen – Flood Fixture & Pole*	\$61.66	\$61.66
490 Contemporary – 12,000 Lumen – Fixture Only	Moved from LS	\$17.45
494 Contemporary – 12,000 Lumen – Smooth Pole	Moved from LS	\$31.42
493 Contemporary – 107,800 Lumen – Fixture Only*	Moved from LS	\$51.32
496 Contemporary – 107,800 Lumen – Smooth Pole*	Moved from LS	\$65.28
<b>High Pressure Sodium</b>		
440 Acorn – 4,000 Lumen – Flood Fixture & Pole	\$15.11	\$18.13
410 Acorn – 4,000 Lumen – Fluted Pole	\$22.31	\$26.77
466 Colonial – 4,000 Lumen – Smooth Pole	\$10.79	\$12.95
412 Coach – 5,800 Lumen – Smooth Pole	\$33.87	\$36.70
413 Coach – 9,500 Lumen – Smooth Pole	\$34.19	\$37.46

	<b>Current</b>	<b>Proposed</b>
360 Granville Pole and Fixture, 16000L	\$62.30	\$62.30

**Lighting Energy Service - Rate LE**

	<b>Current</b>	<b>Proposed</b>
Energy Charge per kWh:	\$0.07328	\$0.07328

**Traffic Energy Service - Rate TE**

<b>Current</b>	
Basic Service Charge per Month:	\$4.00 per delivery
Energy Charge per kWh:	\$0.08740
<b>Proposed</b>	
Basic Service Charge per Month:	\$4.00 per delivery point
Energy Charge per kWh:	\$0.09289

**Availability of Service**

**Current**

Available to municipalities, county governments, divisions of the state or Federal governments or any other governmental agency for service on a 24-hour all-day every-day basis, where the governmental agency owns and maintains all equipment on its side of the point of delivery of the energy supplied hereunder. In the application of this rate each point of delivery will be considered as a separate customer. This service is limited to traffic control devices including, signals, cameras, or other traffic lights and electronic communication devices.

**Proposed**

Available to municipalities, county governments, divisions of the state or Federal governments or any other governmental agency for service on a 24 hour all day every day basis, where the governmental agency owns and maintains all equipment on its side of the point of delivery of the energy supplied hereunder. In the application of this rate each point of delivery will be considered as a separate customer. This service is limited to traffic control devices including, but not limited to, signals, cameras, or other traffic lights, electronic communication devices, and emergency sirens.

**Cable Television Attachment Charges – Rate CTAC**

	<b>Current</b>
Attachment Charge per year for each attachment to pole:	\$7.25
Rate schedule to be renamed Pole and Structure Attachment Charges Rate PSA.	

**Pole and Structure Attachment Charges – Rate PSA**

Company proposes numerous revisions to the terms and conditions of service in this schedule. These revisions include the expansion of the applicability of the rates, terms and conditions to all telecommunication carriers except: (1) facilities of incumbent local exchange carriers with joint use agreements with the Company; (2) facilities subject to a fiber exchange agreement; and (3) Macro Cell Facilities. Company further proposes any telecommunication carrier who is currently permitted to make attachments to Company facilities under an existing license agreement will be required to comply with the terms of the revised Schedule PSA upon the expiration of the current term of its license agreement with KU. In addition, Company proposes other changes in the terms and conditions, including, but not limited to attachment charges for each linear foot of duct and Wireless Facility, to the imposition of a late payment fee of three percent if the attachment customer fails to pay its bill within 60 days of the bill's issuance, that attachment customers become members in the National Joint Utilities Notification System, a detailed listing of the conditions and procedures to obtain permission to attach facilities to Company structures and to maintain and operate those attachments on KU structures and the conditions under which wireless facilities may be attached to Company structures. Customers who may take service under this schedule or under a license agreement with Company for the attachment to Company facilities or desire to make such attachments to Company's poles or other structures or within Company's ducts may review the proposed revisions at Company's website or other locations identified below in this notice.

**Attachment Charges**

- \$ 7.25 per year for each wireline pole attachment.
- \$ 0.81 per year for each linear foot of duct.
- \$84.00 per year for each Wireless Facility.

**Electric Vehicle Supply Equipment - EVSE**

	<b>Current</b>	<b>Proposed</b>
<b>Monthly Charging Unit:</b>		
Single Charger	\$180.83	\$185.28
Dual Charger	\$302.41	\$311.03

**Electric Vehicle Charging – EVC**

	<b>Current</b>	<b>Proposed</b>
Fee Per Hour	\$2.88	\$2.90

**Curtailable Service Rider – CSR**

	<b>Current</b>	<b>Proposed</b>
<b>Primary</b>		
Monthly Demand Credit Per kVA:	\$ 6.50	\$ 3.31
Non-Compliance Charge Per kVA:	\$16.00	\$16.00
<b>Transmission</b>		
Monthly Demand Credit Per kVA:	\$ 6.40	\$ 3.20
Non-Compliance Charge Per kVA:	\$16.00	\$16.00

**Availability of Service**

**Current**

This rider shall be made available to customers served under applicable power schedules who contract for not less than 1,000 kVA individually. The aggregate service under CSR for Kentucky Utilities Company is limited to 100 MVA in addition to the contracted curtailable load under P.S.C. No. 7, CSR1 for Kentucky Utilities Company as of August 1, 2010.

**Proposed**

This rider shall be limited to customers served under applicable power schedules who contract for not less than 1,000 kVA individually, and executed a contract under this rider prior to January 1, 2017. Company will not enter into contracts for additional curtailable demand, even with customers already participating in this rider, on or after January 1, 2017.

**Contract Option**

**Current**

Customer may, at Customer's option, contract with Company to curtail service upon notification by Company. Requests for curtailment shall not exceed three hundred and seventy-five (375) hours per year nor shall any single request for curtailment be for less than thirty (30) minutes or for more than fourteen (14) hours per calendar day, with no more than two (2) requests for curtailment per calendar day within these parameters. A curtailment is a continuous event with a start and stop time. Company may request or cancel a curtailment at any time during any hour of the year, but shall give no less than sixty (60) minutes notice when either requesting or canceling a curtailment.

Company may request at its sole discretion up to 100 hours of physical curtailment per year. Company will request physical curtailment only when (1) all available units have been dispatched or are being dispatched and (2) all off-system sales have been or are being curtailed. Company may also request at its sole discretion up to 275 hours of curtailment per year with a buy-through option, whereby Customer may, at its option, choose either to curtail service in accordance with this Rider or to continue to purchase its curtailable requirements by paying the Automatic Buy-Through Price, as set forth below, for all kilowatt hours of curtailable requirements.

**Proposed**

Customer may, at Customer's option, contract with Company to curtail service upon notification by Company. Requests for curtailment shall not exceed three hundred and seventy-five (375) hours per year nor shall any single request for curtailment be for less than thirty (30) minutes or for more than fourteen (14) hours per calendar day, with no more than two (2) requests for curtailment per calendar day within these parameters. A curtailment is a continuous event with a start and stop time. Company may request or cancel a curtailment at any time during any hour of the year, but shall give no less than sixty (60) minutes notice when either requesting or canceling a curtailment.

Company may request at its sole discretion up to 100 hours of physical curtailment per year. Company will request physical curtailment only when (1) all available units have been dispatched or are being dispatched and (2) all off-system sales have been or are being curtailed. Company may also request at its sole discretion up to 275 hours of curtailment per year with a buy-through option, whereby Customer may, at its option, choose either to curtail service in accordance with this Rider or to continue to purchase its curtailable requirements by paying the Automatic Buy-Through Price, as set forth below, for all kilowatt hours of curtailable requirements. Customer's choosing to curtail rather than buy through during any of the 275 hours of Company-requested curtailment with a buy-through option each year shall not reduce, diminish, or detract from the 100 hours of physical curtailment Company may request each year.

**Automatic Buy-Through Price**

**Current**

The Automatic Buy-Through Price per kWh shall be determined daily in accordance with the following formula:

Automatic Buy-Through Price = NGP x .012000 MMBtu/kWh

Where: NGP represents the mid-point price for natural gas (\$/MMBtu) posted for the day in Platts Gas Daily for Dominion—South Point and will be used for the electrical day from 12 midnight to midnight. Also the posted price for Monday or the day after a holiday is the posted price for Saturday, Sunday and the holiday.

**Proposed**

The Automatic Buy-Through Price per kWh shall be determined daily in accordance with the following formula:

Automatic Buy-Through Price = NGP x .012000 MMBtu/kWh

Where: NGP is the Cash Price for "Natural Gas, Henry Hub" as posted in The Wall Street Journal on-line for the most recent day for which a price is posted that precedes the day in which the buy-through occurred.

**Standard Rider for Excess Facilities – Rider EF**

	<b>Current</b>	<b>Proposed</b>
Customer shall pay for excess facilities by:		
(a) Making a monthly Excess Facilities charge payment equal to the installed cost of the excess facilities times the following percentage:		
Percentage with No Contribution-in-Aid-of-Construction	1.24%	1.24%
(b) Making a one-time Contribution-in-Aid-of-Construction equal to the installed cost of the excess facilities plus a monthly Excess Facilities Charge payment equal to the installed cost of the excess facilities times the following percentage:		
Percentage with Contribution-in-Aid-of-Construction	0.48%	0.48%

**Standard Rider for Redundant Capacity Charge – Rider RC**

	<b>Current</b>	<b>Proposed</b>
Capacity Reservation Charge per Month:	(Per kW/kVA)	(Per kW/kVA)
Secondary Distribution	\$1.12	\$1.09
Primary Distribution	\$1.11	\$0.90

**Economic Development Rider – Rider EDR**

Company proposes the following changes to Rider EDR's Terms and Conditions:

**Current**

c)2)i.) Company and the existing customer will determine Customer's Existing Base Load by averaging Customer's previous three years' monthly billing loads, subject to any mutually agreed upon adjustments thereto.

**Proposed**

c)2)i.) Company and the existing customer will determine Customer's Existing Base Load by calculating a 12-month rolling average of measured demand.

**Standard Rider for Supplemental or Standby Service – Rider SS**

	<b>Current</b>
Contract Demand per month:	(Per kW/kVA)
Secondary	\$12.84
Primary	\$11.63
Transmission	\$10.58

**Proposed**

Company proposes to eliminate this Rider.

**Electric Vehicle Supply Equipment – Rider EVSE-R**

	<b>Current</b>	<b>Proposed</b>
<b>Monthly Charging Unit Fee</b>		
Single Charger	\$132.68	\$133.18
Dual Charger	\$206.11	\$206.81

**Returned Payment Charge**

<b>Current Rate</b>	\$10.00
<b>Proposed Rate</b>	\$10.00

**Meter Test Charge**

<b>Current Rate</b>	\$75.00
<b>Proposed Rate</b>	\$75.00

**Disconnecting and Reconnecting Service Charge**

<b>Current Rate</b>	\$28.00
<b>Proposed Rate</b>	\$28.00

**Meter Pulse Charge**

<b>Current Rate</b>	\$15.00 per month per installed set of pulse-generating equipment
<b>Proposed Rate</b>	\$15.00 per month per installed set of pulse-generating equipment

**Meter Data Processing Charge**

<b>Current Rate</b>	\$2.75 per report
Company proposes to eliminate this charge.	

Continued from previous page

Unauthorized Reconnect Charge

Proposed

When the Company determines that Customer has tampered with a meter, reconnected service without authorization from Company that previously had been disconnected by Company, or connected service without authorization from Company, then the following charges shall be assessed for each instance of such tampering or unauthorized reconnection or connection of service:

1. A charge of \$70.00 for tampering or an unauthorized connection or reconnection that does not require the replacement of the meter;
2. A charge of \$90.00 for tampering or an unauthorized connection or reconnection that requires the replacement of a single-phase standard meter;
3. A charge of \$110.00 for tampering or an unauthorized connection or reconnection that requires the replacement of a single-phase Automatic Meter Reading (AMR) meter;
4. A charge of \$174.00 for tampering or an unauthorized connection or reconnection that requires the replacement of a single-phase Automatic Meter System (AMS) meter; or
5. A charge of \$177.00 for tampering or an unauthorized connection or reconnection that requires the replacement of a three-phase meter.

Customer Deposits

Current Rate

For Customers Served Under Residential Service Rates RS, RTOD-Energy, and RTOD-Demand: \$160.00

For Customers Served Under General Service Rate GS \$240.00

For all other Customers not classified herein, the deposit will be no more than 2/12 of Customer's actual or estimated annual bill where bills are rendered monthly.

Proposed Rate

For Customers Served Under Residential Service Rates RS, RTOD-Energy, and RTOD-Demand: \$160.00

For Customers Served Under General Service Rate GS \$240.00

For all other Customers not classified herein, the deposit will be no more than 2/12 of Customer's actual or estimated annual bill where bills are rendered monthly.

Late Payment Charge

Current Rate

If full payment is not received by the due date of the bill, a 3% late payment charge will be assessed on the current month's charges for customers served under the following Standard Rate Schedules: RS, RTOD-Energy, RTOD-Demand, VFD, GS, and AES.

If full payment is not received by the due date of the bill, a 1% late payment charge will be assessed on the current month's charges for customers served under the following Standard Rate Schedules: PS, TODS, TODP, RTS, and FLS.

Proposed Rate

If full payment is not received by the due date of the bill, a 3% late payment charge will be assessed on the current month's charges for customers served under the following Standard Rate Schedules: RS, RTOD-Energy, RTOD-Demand, VFD, GS, AES, and PSA.

If full payment is not received by the due date of the bill, a 1% late payment charge will be assessed on the current month's charges for customers served under the following Standard Rate Schedules: PS, TODS, TODP, RTS, and FLS.

Environmental Cost Recovery Surcharge

Availability of Service

Current

This schedule is mandatory to all Standard Electric Rate Schedules listed in Section 1 of the General Index except CTAC and Special Charges, all Pilot Programs listed in Section 3 of the General Index, and the FAC (including the Off-System Sales Tracker) and DSM Adjustment Clauses. Standard Electric Rate Schedules subject to this schedule are divided into Group 1 or Group 2 as follows:

Group 1: Rate Schedules RS; RTOD-Energy; RTOD-Demand; VFD; AES; LS; RLS; LE; and TE.

Group 2: Rate Schedules GS; PS; TODS; TODP; RTS; and FLS.

Proposed

This schedule is mandatory to all Standard Electric Rate Schedules listed in Section 1 of the General Index except PSA and Special Charges, all Pilot Programs listed in Section 3 of the General Index, and the FAC (including the Off-System Sales Tracker) and DSM Adjustment Clauses. Standard Electric Rate Schedules subject to this schedule are divided into Group 1 or Group 2 as follows:

Group 1: Rate Schedules RS; RTOD-Energy; RTOD-Demand; VFD; AES; LS; RLS; LE; and TE.

Group 2: Rate Schedules GS; PS; TODS; TODP; RTS; FLS; EVSE; and EVC.

Home Energy Assistance Program Adjustment Clause HEA

Rate

Current

\$0.25 per meter per month.

Proposed

\$0.25 per month.

Terms and Conditions – Customer Bill of Rights

Current

You have the right to participate in equal, budget payment plans for your natural gas and electric service.

Proposed

You have the right to participate in equal, budget payment plans for your natural gas and electric service, unless any rate or rider under which you take service explicitly states otherwise.

Terms and Conditions – General

Company Terms and Conditions

Current

In addition to the rules and regulations of the Commission, all electric service supplied by Company shall be in accordance with these Terms and Conditions, which shall constitute a part of all applications and contracts for service.

Proposed

In addition to the rules and regulations of the Commission, all electric service supplied by Company shall be in accordance with these Terms and Conditions to the extent that such Terms and Conditions are not in conflict, nor inconsistent, with the specific provisions in each rate schedule, and which shall constitute a part of all applications and contracts for service.

Customer Generation

Proposed

All existing and future installations of equipment for the purpose of electric generation that is intended to run in parallel with utility service, regardless of the length of parallel operation, shall be reported by the Customer (or the Customer's Representative) to the Company in conjunction with the "Notice to Company of Changes in Customer's Load" set out in the Customer Responsibilities section of the Terms and Conditions of the Company's Tariff.

Terms and Conditions – Customer Responsibilities

Application for Service

Current

A written application or contract, properly executed, may be required before Company is obligated to render electric service. Company shall have the right to reject for valid reasons any such application or contract.

All applications for service shall be made in the legal name of the party desiring the service.

Where an unusual expenditure for construction or equipment is necessary or where the proposed manner of using electric service is clearly outside the scope of Company's standard rate schedules, Company may establish special contracts giving effect to such unusual circumstances. Customer accepts that non-standard service may result in the delay of required maintenance or, in the case of outages, restoration of service.

Proposed

A written, in-person, electronic, or oral application or contract, properly executed, will be required before Company is obligated to render electric service. Company may require any party applying for service to provide some or all of the following information for the party desiring service: full legal name, address, full Social Security Number or other taxpayer identification number, date of birth (if applicable), relationship of the applying party to the party desiring service, and any other information Company deems necessary for legal, business, or debt-collection purposes. Company shall have the right to reject for valid reasons any such application or contract, including the applying party's refusal to provide requested information.

All applications for service shall be made in the legal name of the party desiring the service.

Where an unusual expenditure for construction or equipment is necessary or where the proposed manner of using electric service is clearly outside the scope of Company's standard rate schedules, Company may establish special contracts giving effect to such unusual circumstances. Customer accepts that non-standard service may result in the delay of required maintenance or, in the case of outages, restoration of service.

Contracted Demands

Current

For rate applications where billing demand minimums are determined by the Contract Demand customer shall execute written Contract prior to rendering of service. At Company's sole discretion, in lieu of a written contract, a completed load data sheet or other written load specification, as provided by Customer, can be used to determine the maximum load on Company's system for determining Contract Demand minimum.

Proposed

For rate applications where billing demand minimums are determined by the Contract Demand customer shall execute written Contract prior to rendering of service. At Company's sole discretion, in lieu of a written contract, a completed load data sheet or other written load specification, as provided by Customer, can be used to determine the maximum load on Company's system for determining Contract Demand minimum.

If Company or Customer terminates Customer's service under a rate schedule that contains demand charges and Customer subsequently applies to Company to reestablish service to the same premise or facility, Company must determine monthly billing demand for the reestablished service as though Customer had continuously taken service from the time of service termination through the reestablishing of

service to Customer. For the purpose of determining the monthly billing demand described in the preceding sentence, the demand to be used for the period during which Customer did not take service from Company shall be the actually recorded demand, if any, for the premise or facility during that period. The preceding two sentences will not apply if Company determines, in its sole discretion, that material changes to Customer's facilities, processes, or practices justify establishing a new Contract Demand for the reestablished service.

Terms and Conditions – Company Responsibilities

Metering

Current

The electricity used will be measured by a meter or meters to be furnished and installed by Company at its expense and all bills will be calculated upon the registration of said meters. When service is supplied by Company at more than one delivery point on the same premises, each delivery point will be metered and billed separately on the rate applicable. Meters include all measuring instruments. Meters will be located outside whenever possible. Otherwise, meters will be located as near as possible to the service entrance and on the ground floor of the building, in a clean, dry, safe and easily accessible place, free from vibration, agreed to by Company.

Proposed

The electricity used will be measured by a meter or meters to be furnished and installed by Company at its expense and all bills will be calculated upon the registration of said meters. Company has the right to install any meter or meters it deems in its sole discretion to be necessary or prudent to serve any customer, including without limitation a digital, automated meter reading, automated metering infrastructure, or advanced metering systems meter or meters. When service is supplied by Company at more than one delivery point on the same premises, each delivery point will be metered and billed separately on the rate applicable. Meters include all measuring instruments. Meters will be located outside whenever possible. Otherwise, meters will be located as near as possible to the service entrance and on the ground floor of the building, in a clean, dry, safe and easily accessible place, free from vibration, agreed to by Company.

Firm Service

Current

Where a customer-generator supplies all or part of the customer-generator's own load and desires Company to provide supplemental or standby service for that load, the customer-generator must contract for such service under Company's Supplemental or Standby Service Rider, otherwise Company has no obligation to supply the non-firm service. This requirement does not apply to Net Metering Service (Rider NMS).

Proposed

Where a customer-generator supplies all or part of the customer-generator's own load and desires Company to provide service for that load, the customer-generator must contract for such service, otherwise Company has no obligation to supply the non-firm service.

Terms and Conditions – Residential Rate Specific Terms and Conditions

Power Requirement

Current

Single-phase power service used for domestic purposes will be permitted under Residential Rate RS when measured through the residential meter subject to the conditions set forth below:

Proposed

Single-phase power service used for domestic purposes will be permitted under Residential Rates RS, RTOD-Energy, and RTOD-Demand when measured through the residential meter subject to the conditions set forth below:

Terms and Conditions – Billing

Meter Readings and Bills

Proposed

As used in the entirety of this Tariff, "meter reading" and similar terms shall include data collected remotely from automated meter reading, automated meter infrastructure, advanced metering systems, and other electronic meter equipment or systems capable of delivering usage data to Company. A physical, manual reading of a meter is not required to constitute a "meter reading."

Terms and Conditions – Discontinuance of Service

Current

I. For fraudulent or illegal use of service. When Company discovers evidence that by fraudulent or illegal means Customer has obtained unauthorized service or has diverted the service for unauthorized use or has obtained service without same being properly measured, the service to Customer may be discontinued without notice. Within twenty-four (24) hours after such termination, Company shall send written notification to Customer of the reasons for such discontinuance of service and of Customer's right to challenge the termination by filing a formal complaint with the Public Service Commission of Kentucky. Company's right of termination is separate from and in addition to any other legal remedies which the utility may pursue for illegal use or theft of service. Company shall not be required to restore service until Customer has complied with all rules of Company and regulations of the Commission and Company has been reimbursed for the estimated amount of the service rendered and the cost to Company incurred by reason of the fraudulent use.

Proposed

I. For fraudulent or illegal use of service. When Company discovers evidence that by fraudulent or illegal means Customer has obtained unauthorized service or has diverted the service for unauthorized use or has obtained service without same being properly measured, the service to Customer may be discontinued without notice. Within twenty-four (24) hours after such termination, Company shall send written notification to Customer of the reasons for such discontinuance of service and of Customer's right to challenge the termination by filing a formal complaint with the Public Service Commission of Kentucky. Company's right of termination is separate from and in addition to any other legal remedies which the utility may pursue for illegal use or theft of service. Company shall not be required to restore service until Customer has complied with all rules of Company and regulations of the Commission and Company has been reimbursed for the estimated amount of the service rendered, and assessment of the charges under the Unauthorized Reconnection Charge provision of Special Charges incurred by reason of the fraudulent use.

Kentucky Utilities Company also proposes to change the text of the following electric tariffs: Residential Service Rate RS, Residential Time-of-Day Energy Service Rate RTOD-Energy, Residential Time-of-Day Demand Service Rate RTOD-Demand, Volunteer Fire Department Service Rate VFD, General Service Rate GS, All Electric School Rate AES, Power Service Rate PS, Time-of-Day Secondary Service Rate TODS, Time-of-Day Primary Service Rate TODP, Retail Transmission Service Rate RTS, Fluctuating Load Service Rate FLS, Lighting Service Rate LS, Restricted Lighting Service Rate RLS, Traffic Energy Service Rate TE, Electric Vehicle Supply Equipment Rate EVSE, Special Charges, Curtailable Service Rider CSR, Temporary/Seasonal Service Rider TS, Economic Development Rider EDR, Environmental Cost Recovery Surcharge ECR, Home Energy Assistance Program Adjustment Clause HEA, and the Terms and Conditions.

Complete copies of the proposed tariffs containing text changes and proposed rates may be obtained by contacting Kentucky Utilities Company at 220 West Main Street, Louisville, Kentucky, 1-800-981-0600, or visiting Kentucky Utilities Company's website at [www.lge-ku.com](http://www.lge-ku.com).

The foregoing rates reflect a proposed annual increase in revenues of approximately 6.4% to Kentucky Utilities Company.

The estimated amount of the annual change and the average monthly bill to which the proposed electric rates will apply for each electric customer class is as follows:

Electric Rate Class	Average Monthly Usage (kWh)	Annual \$ Increase	Annual % Increase	Monthly Bill \$ Increase	Monthly Bill % Increase
Residential	1,179	36,998,263	5.94	7.16	5.94
Residential Time-of-Day	1,171	1,800	5.91	6.21	5.91
General Service	1,805	12,094,454	5.06	12.10	5.06
All Electric School	21,341	777,151	5.34	109.21	5.34
Power Service	41,288	10,184,158	5.04	181.52	5.04
Time-of-Day Secondary	225,256	6,865,948	5.55	925.48	5.55
Time-of-day Primary	1,241,109	17,335,551	6.61	5,224.70	6.61
Retail Transmission	4,160,317	6,022,822	6.71	16,730.06	6.71
Fluctuating Load	46,076,466	2,235,014	7.25	186,251.16	7.25
Outdoor Lights	61	1,866,484	6.14	0.92	6.14
Lighting Energy	9,307	0	0.00	0.00	0.00
Traffic Energy	160	8,175	4.71	0.88	4.71
PSA (presently CTAC)	N/A	0	0	0	0
Rider - CSR	N/A	8,688,375	49.95	80,447.92	49.95

Notice is further given that a person may examine this application at the offices of Kentucky Utilities Company, 100 Quality Street, Lexington, Kentucky, and may also be examined at Kentucky Utilities Company's website at [www.lge-ku.com](http://www.lge-ku.com). A person may also examine this application at the Public Service Commission's offices located at 211 Sower Boulevard, Frankfort, Kentucky, Monday through Friday, 8:00 a.m. to 4:30 p.m., or through the Commissioner's Web site at <http://psc.ky.gov>.

Comments regarding the application may be submitted to the Public Service Commission, by mail to Public Service Commission, Post Office Box 615, Frankfort, Kentucky 40602, or by sending an email to the Commission's Public Information Officer at [psc.info@ky.gov](mailto:psc.info@ky.gov). All comments should reference Case No. 2016-00370.

The rates contained in this notice are the rates proposed by Kentucky Utilities Company, but the Public Service Commission may order rates to be charged that differ from the proposed rates contained in this notice. A person may submit a timely written request for intervention to the Public Service Commission, Post Office Box 615, Frankfort, Kentucky 40602, establishing the grounds for the request including the status and interest of the party. If the commission does not receive a written request for intervention within thirty (30) days of initial publication or mailing of the notice, the commission may take final action on the application.

Kentucky Utilities Company c/o LG&E and KU Energy LLC 220 West Main Street P. O. Box 32010 Louisville, Kentucky 40232 1-800-981-0600	Public Service Commission 211 Sower Boulevard P. O. Box 615 Frankfort, Kentucky 40601 502-564-3940
---	--



# Thanksgivings of long ago much different than today

As a child growing up, Thanksgiving was a much anticipated to holiday. Thanksgiving and Christmas were the only time of the year that we had turkey and dressing, giblet gravy and cooked cranberries. My mom and grandmother always prepared these wonderful meals.

Each had her own things that she prepared. Mom always baked the turkey and my grandmother always prepared the cornbread dressing and giblet gravy. There were other good foods also, but turkey and dressing meant Thanksgiving.

In those days, Christmas wasn't thought of just yet. Thanksgiving came first, and it was special in its own right, not like today, where it sometimes even seems to be pushed aside as Christmas decorations and toys have already been thrown in our faces before Halloween is even over.

From the archives of The Crittenden Press, let's take a look back on those Thanksgiving times of years ago, where it was celebrated in its own special way by the good folks of Marion and the county. It was a special time to give thanks.

Drug stores and department stores ran ads in The Press telling of their items for that special day. There were fruits and candies available from the drug stores and the department stores had many new clothing items for that trip to the Thanksgiving services.

One of the churches in Marion always had a special service on Thanksgiving Day with a union service for

everyone to attend. Many of the county churches and schools also had a special Thanksgiving Day service.



**Brenda Underdown**  
County Historian

### Forgotten Passages

#### Nov. 26, 1920 Thanksgiving Proclamation

"Believing in the spirit of thanksgiving as fostered and practiced by our forefathers and realizing that much good has come from this annual observance of a day of rejoicing for the many blessings which the Almighty has bestowed upon our

land and upon the individual homes of the land, and believing too that a continuance of this custom would be pleasing in the sight of Him, who has made our

Nine Hundred and Twenty, as a day of Thanksgiving in the City of Marion.

"Furthermore, I earnestly request that the citizens of our town observe in a fitting and appropriate way this day of thanksgiving by assembling themselves together for a short service of prayer and praise to Him who has so abundantly blessed us during the year which is closing.

"I also very sincerely explore the businessmen of the City of Marion to close their respective places of business from ten o'clock on the morning of the above mentioned day until two o'clock in the afternoon of the same day, as a mark of sincere gratitude for the blessings which we have enjoyed.

"Witness my hand and seal, this, the 23rd day of November 1920. Signed: J.W. Blue, Mayor."

#### Nov. 30, 1928 Thanksgiving Proclamation

"Marion has passed through another year of progress. We have, as a community and as individual citizens, been blessed in many ways. Therefore, we should not forget the gratitude we owe our heavenly father for the prosperity and happiness we have enjoyed. At the same time, we should not be forgetful of those less fortunate, but by deeds of charity, we should make our acknowledgment of our blessings more acceptable.

"Whereas Calvin Coolidge, President of the United States, has set apart Thursday, the twenty-ninth day of November as a day of general Thanksgiving and prayer, and the governor of Ken-

tucky a Thanksgiving proclamation, and believing the Spokesmen of this great nation and this great commonwealth, in conforming to one of our most worthy traditions have voiced the spirit of reverence and wor-

ship which still sways the hearts of the American people.

"Therefore I, J.V. Threlkeld, mayor of the City of Marion, Ky., hereby recommend that on that day our citizens shall cease from their daily work, at least from 10:30 a.m. during the time of the Thanksgiving service, and either in their home or place of worship give thanks to the Supreme Ruler for the blessings of the past year.

"In witness whereof I have here unto set my hand this twenty-seventh day of November 1928. Signed: J.V. Threlkeld, Mayor."

#### The Union Services

"The annual Union Thanksgiving sermon was delivered at 10:30 o'clock Thursday morning at the Main Street Presbyterian Church by Rev. A.R. Kasey of Bowling Green, who has been conducting a revival meeting at the Methodist church.

"Most of the Marion churches cooperated in the services in which several of the pastors assisted.

"Among the ministers assisting were the Rev. F.L McDowell of the Cumberland Presbyterian, the Rev. B.M. Currie, of the Methodist church and the Rev. J.W. Flynn of the Christian Church. Music was furnished by musicians from the Marion churches.

#### November 1931 Thanksgiving is observed by entire town

"Community service held at Southern Presbyterian Church, U.S.A. Thursday morning, Rev. J.M. Dameron delivered the annual Community Thanksgiving sermon to a packed house at the Southern Presbyterian Church. Assisting pastors were Rev. Charles A. Humphrey, pastor of the Marion Methodist Church, and Rev. J.W.

Flynn, of the Christian Church.

"At noon, the Parent Teachers Association served a Thanksgiving dinner at the Woman's Club building,

#### Thanksgiving at the Church at Weston in 1907

"Thanksgiving meeting at Weston. It was an all day meeting. People from Sturgis, Bells Mines and Hill's Chapel were present to help in the meeting and to enjoy the good dinner the people had prepared.

"The service opened up with some stirring songs by the Weston choir. Rev. W.T. Oakley preached like an old-time Methodist preacher. The truth is, he was born into this world a Methodist and is living with the only daughter of a Methodist and, of course, he can preach with the best of them.

"Uncle King Hughes and wife were there with their fine fat turkey, Uncle Martin Gahagan and wife were there with lots of good things to eat and a host of others with well-filled baskets.

"A long table was set and loaded down with good things to eat, too numerous to mention. Everybody was invited to take out and help themselves.

"My, how Charley, the hotel man, did eat, and he was not the only man that ate to his fill. There was a free will offering made to the church to be used as they thought best.

"An hour and a half was spent in social conversation after which the religious services were held. Following the service a praise service was held and many took part, thanking God for the many blessings of the year now closing and also for the privileges of this day."

*(Editor's note: Brenda Underdown is a Crittenden County historian, genealogist, chair of the Crittenden County Historical Society and a member of Crittenden County Genealogical Society. Much more local history can be found on her blog at OurForgottenPassages.blogspot.com.)*



and in the evening, another dinner was served. At the evening meal, members of the Marion and Princeton football teams were guests.

"Practically every business house in Marion observed a holiday on Thanksgiving."

#### Marion schools

"All rooms in the graded school are attractively decorated for the Thanksgiving holiday, and in the lower rooms, many unique features significant of the season are being introduced into the routine school work.

"In the second grade, under the direction of Miss Naomi Asher, the children are 'Playing at History,' constructing a pioneer settlement at the sand table.

"In the third grade, of which Miss Nannie Miller is teacher, pictorial health books have just been completed and the children are keeping 'Thanksgiving Books' and are telling the story of the first Thanksgiving in pictures.

## COMPUTERS

Continued from Page 1A

would cost to replace all the aging Mac computers in the schools' technology labs and equip them with enough devices for every student.

Having the Cloud-based, or internet-based, computing devices known as "thin clients" will allow students to use online applications and programs used for class work. The computers have very limited ability to download or store data. Almost every line of school work can be done on these devices.

Students will have limited access to the Chromebooks, but every one will have the opportunity to use them during the day. They will be assigned the same computer each year.

At the middle school, Principal Tom Radivonyk said students will be assigned a computer they collect each morning and turn in at the end of the day. They will not be taken home during the current academic year.

Next door at the high school, students will be eligible to take the laptops home with a \$20 tech fee to insure the device and a parent's attendance at a school meeting to explain expectations and usage. The meeting is planned for Dec. 14, said Principal Curtis Brown.

Each school will be respon-

sible for acquiring charging stations for the computers.

Superintendent Vince Clark said filters can be installed on the units to limit where students can visit online no matter where they are connected to the internet. Chromebooks are expected to have a five-year lifespan, comparable with desktop computers used in school labs.

"It's a wonderful opportunity for the students," board member Bill Asbridge said.

Chromebooks use Google servers to drive programs and store work. Assignments are turned in to teachers with one click, and in-

structors, from their own computer, can monitor in real time students' efforts, such as when they are writing papers or working problems. Homework can be completed online or offline.

The devices could be especially handy during snow days, for students homebound due to illness or for alternative school pupils. Clark said high school students enrolled in dual credit high school/college courses are particularly excited about the Chromebooks.

The units cost about \$160 each and are very durable and easy to repair, said Ben Grainger, the school district's technology coordinator.

Approval of the initiative at Tuesday's meeting was met with smiles and applause.



Clark

### List with Homestead Today!



**1721 U.S. 641, Marion, Ky.**  
3 Br, 2 bath, brick home on 1.6 +- ac, large det garage, blacktop drive. Less than 1 mile commute to Industrial Park in community.  
**\$127,900**

- HOMES**
- HISTORICAL 2 Story Home with basement, 3 BR, 2 Bath, detached garage. 251 W Belleville St. \$88,450
- Hidden in town, 3 Br, 2 bath home with wood floors, sun room, shop with bath inside on 15.72 +- ac. 232 Old Pinney Rd., Marion, \$127,900.
- 4 BR, 2 1/2 Bath, just outside of town, pool, central heat/air, partial basement. 1000 SFI 1668 (Crittenden Springs) \$27,900
- This is a must see!! 3Br, 2 bath home sitting on 18+- ac along with barn, corn crib and storage building. 1961 US 641. \$179,900
- 3 BR, 1 Bath, brick home located near city park. All appliances stay. City utilities. 252 Country Drive. \$49,900
- Home on 14+- acres, barn, 3 large buildings, all fenced with a pond. Lafayette Heights \$129,900
- 2 BR, 1 bath on corner lot close to school, all appliances stay, 305 W. Depot St. \$34,900
- 3 or 4 BR, 3 bath on 2.6 acres with kitchen in basement, U.S. 60 West, Marion, \$144,900
- Quiet location on dead-end street in Marion with 3 lots, large detached garage, 217 W. Central Ave., \$49,900.
- You need too see this one. 4 bed, 2 1/2 bath with 2 car attached and 2 car detached. Big fenced back yard. Absolutely gorgeous. 136 Briarwood Dr., Marion, KY. \$229,900.
- 3 bed, 2 bath brick home, 213 Fords Ferry Rd, city utilities, appliances stay. \$69,900
- Remodeled house and large lot in town, walk to courthouse, 3 bed, 2 bath 313 East Belleville St. \$79,900
- Walk to school, great town home 3 bed 2 bath with large rooms and fenced back yard and detached garage \$68,000 fm.

- COMMERCIAL**
- Store front on Main, recently remodeled and rewired. 106 South Main St., \$55,900.
- LOTS**
- 110+- Acre tract, All wooded, \$2,000 per acre with possible land contract. 9285 US 60 W, Marion, \$199,000
- 250+- Acre tract, Wooded, food plots, water, \$2,000 per acre with possible land contract. 9285 US 60 W, Marion, \$499,000
- 6.55 acres within city limits, tract #2 is 3.25 ac and tract #3 is 3.30 ac. Can be sold together or separate. Located on Yandell St. in Marion, Ky. Total \$29,800
- 1.2+- acres, country atmosphere, subdivision lifestyle, Grand View Estates, located on Ky. 506 in Marion, Ky. \$10,000
- 70 wide x 220 deep city lot with all utilities, located on N. Weidon St., Marion, Ky. \$3,500
- 78.44 acres approx. 35+- cleared with large pond, county water available, View Rd., \$164,800.
- 11.18 acres +- minutes out of town on Country View Dr., Marion, \$26,800
- Large corner with city utilities, 110 Sunset Dr., Marion, Ky., \$9,900.
- 205-Acre Hide Away! This property has 40 open acres and 165 in woods. Three water holes and a new building on the highest point. Hunting property with income potential. Near Ohio River in Crittenden County. Very Secluded. \$389,900.
- 650 acres in Crittenden County, two cabins, one with power and water, spring-fed creek, two ponds, 50+- tillable acres, marketable timber, road frontage on US 60 and Baker Rd. \$1,300,000

Storage Unit Open • \$125.00 a Month

**HOMESTEAD AUCTION REALTY**  
308 N. MAIN ST., MARION, KY 42064  
(270) 965-9999  
PRINCIPAL BROKER Darrin Tabor  
(270) 704-0041  
www.homesteadauctionrealty.com

## ATTENTION LAND OWNERS

KENTUCKY LAND IS IN DEMAND. REALIZE FULL MARKET VALUE IN THE SALE OF YOUR RECREATIONAL PROPERTY. WHITETAIL PROPERTIES OFFERS A DIVERSE PLATFORM OF SELLING OPTIONS INCLUDING CONVENTIONAL LISTINGS AND PROFESSIONAL AUCTION SERVICES. IT'S NO MISTAKE THAT LAND SELLERS ACROSS THE MIDWEST HAVE ENTRUSTED THEIR LAND SALE TO US. WHITETAIL PROPERTIES HAS AN EXTENSIVE NETWORK AND CLIENT BASE THAT REACHES THE ENTIRE NATION AND INCLUDES FARMERS, SPORTSMEN, INVESTORS AND HUNTING PROFESSIONALS.

**FOR MORE DETAILS PLEASE CONTACT KENTUCKY LAND SPECIALIST, MARK WILLIAMS (270) 836-0819**

### KENTUCKY LAND FOR SALE

**CRITTENDEN CO, KY - 220 ACRES - \$479,000** - This beautiful scenic farm offers a rustic style home, great ROI and a proven history for big bucks.

**CRITTENDEN CO, KY - 33.54 ACRES - \$169,000** - A perfect place to get away from it all with a home, barn and shop, this property offers the chance to live off the land and establish some great hunting history.

**CRITTENDEN CO, KY - 353.53 ACRES** - Here is a superb hunting tract located in an area known for big bucks with great habitat and topography blend.

**CRITTENDEN CO, KY - 38.1 ACRES - \$72,500** - This is your chance to buy an affordable farm to kill big bucks! Trail systems, deer corridors and power lines run through the property offering tons of options.

**CRITTENDEN CO, KY - 477.73 ACRES** - This property boast a beautiful lodge, miles of wildlife-rich habitat, stocked lakes, all on the banks of the Tradewater River in Western Kentucky.

**CRITTENDEN CO, KY - 288.65 ACRES** - This farm has miles of edge and a wide variety of habitat making this a stellar hunting tract in a proven trophy area.

**CALDWELL CO, KY - 100 ACRES** - This outstanding habitat has everything you need to **SOLD** mature deer with food plots, trail systems, along with great neighbors.

**LIVINGSTON CO, KY - 59 ACRES - \$259,900** - This beautiful property offers 3 ponds for wildfowl and a nice mobile home for a permanent dwelling or lodge. **SOLD**



**WHITETAIL PROPERTIES**  
DREAMS TO REALITY  
**WWW.WHITETAILPROPERTIES.COM**  
TROPHY PROPERTIES REAL ESTATE | DBA WHITETAIL PROPERTIES  
LICENSED IN ILLINOIS, IOWA, KANSAS,  
KENTUCKY, MISSOURI, SAN PEREZ, BROKER  
108 N. MONROE | PITTSFIELD, IL 62363 | 217.285-9000

**for sale PECANS**  
\$10.50/lb. pieces  
\$11.50/lb. halves

**Crittenden County Hospital Auxiliary**  
**GIFT SHOP**  
Monday - Friday  
9 a.m.-4 p.m.



## Deaths

### Norman

June Young Driver Norman, 83, died Wednesday, Nov. 16, 2016 at Crittenden Hospital in Marion following a short illness.

She was born in Caldwell County on March 31, 1933 to Johnnie and Annie Young. She was retired from Potter and Brumfield and a lifelong member of the Marion Church of Christ.

Surviving are daughter, Donna Driver of Marion; sons, George Richard (Rita) Driver of Ledbetter and Keith (Patty) Driver of Marion; grandchildren, Ryan Driver, Russ Driver, Ashley (Brad) LeCompte, Reis Driver, Amber (Evan) Smiley, Cassidy (Patrick) Holloman, Kris (Erin) Driver and Cody Pinson; great-grandchildren, Alex, Colton, Kaine, Carter and Maddison; brothers, Richard, Terry and Stanley Young, all of Marion; sisters, JoAnn Long of Marion, Connie Cowan of Marion, Bonnie Penn of Owensboro and Sue Belt of Marion; and several nieces and nephews.

Preceding her in death were her parents, Johnnie and Annie Young; husbands, George Junior Driver and James "Pid" Norman; brother, James Young; and sisters Mona Blake, Edna Middleton, Juanetta Stevenson and Arietta Stevenson.

Services were Saturday, Nov. 19, 2016 at Gilbert Funeral Home in Marion. Burial was at Love Cemetery.

Memorials may be made to Marion Church of Christ, 546 West Elm St., Marion, KY 42064.



### Rutherford

Frank Davis Rutherford, 76, of Clay died Sunday, Nov. 13, 2016 at Western Kentucky Veterans Center in Hanson.

He worked at Peabody Coal for 42 years and was a member of First Baptist Church in Clay.

Surviving are his wife of 55 years, Betty Rutherford of Clay; a son, Kevin Rutherford and his wife Kelly of New Market, Ala.; a brother, Jimmy Rutherford of Beckley, W.Va.; three grandchildren, Lori Watson, Baily Rutherford and Eric Rutherford; and great-granddaughter, Emmalyn Zachary.

He was preceded in death by his son Darrell Rutherford in 2011.

Services were Wednesday, Nov. 16 at Vanover Funeral Home in Clay with Bro. James Taylor and Bro. Jeff McMain officiating. Burial was at Oddfellows Cemetery in Clay. Military Honors were conducted at the grave site. Memorials may be made to St. Anthony's Hospice, 2410 South Green Street, Henderson, KY 42420.

### Cloyd, 101

Gilbert Martin Cloyd, 101, of Marion died Wednesday, Nov. 16, 2016 at Crittenden Health And Rehabilitation Center.

Surviving are a daughter, Sue (Chris) Spurlin of Hopkinsville; a son, Jerry (Kimberly) Cloyd of Hopkinsville;

and three grandchildren, Michelle Spurlin of Hopkinsville, Hallie (Seth) Hadlock of Franklin and Rachel Cloyd of Bowling Green.

He was preceded in death by his wife, Wilma Conger Cloyd; a son, Gilbert Wayne Cloyd; two sisters, Christine Hendricks and Lucille Cloyd; and a brother, Charles Cloyd.

He was a farmer by occupation, a World War II veteran and member of Central Baptist Church.

Services were Saturday, Nov. 19 at Gilbert Funeral Home with Bro. Curtis Pre-witt officiating. Burial with military rites were at Maple-view Cemetery.

### Lewis

Juanda L. (Hansen) Lewis, 92, of Canton, Ga., died Sunday, Nov. 20, 2016 at Brookdale Assisted Living in Canton.

She is survived by a daughter, Robin Marie Wilson and her husband Richard of Jasper, Ga.; two sons, Charles Larry Nickens and his wife Ruby of Kodiak, Alaska and Ronald Joe Nickens and his wife Esther of Highland Springs, Va.; a sister and brother-in-law Mary Helen and Lloyd Ross of Salem; seven grandchildren; 13 great-grandchildren; one great-great-grandchild; and many nieces, nephews and cousins.

She was preceded in death by her parents, Louis and Johnnie Hansen.

Services were Wednesday, Nov. 23 in the chapel of Boyd Funeral Directors and Cremation Services. Burial was at Frances Cemetery.

### Holcomb

Joan Evans Holcomb, 82, of Marion, died Tuesday, Nov. 22, 2016 at her home.

She was a member of Mexico Baptist Church.

Surviving are daughters Nancy Saavedra of Marion and Laura (Jeff) Hubinger of Crown Point, Ind.; sons, Billy E. (Donna) Holcomb of Marion and Michael (Laurie) Holcomb of Crown Point, Ind.; eight grandchildren, four great-grandchildren; a great-great-grandchild; and a special friend, Neil Sarkisian of Los Angeles, Calif.

She was preceded in death by her parents, Ervin and Carnelia Brasher Woodall, and her husband, Billy Douglas Holcomb.

Services were Wednesday, Nov. 23 at Myers Funeral Home in Marion. Burial was at Frances Cemetery.

### Brasher

Leon Brasher, 90, of Fredonia died Monday, Nov. 21, 2016 at his home.

He was born on Sept. 5, 1926 in Crittenden County to Orbin Austin Brasher and Katie Newberry Brasher Griffin.

He was president and chairman of the board of Fredonia Valley Bank in Fredonia from 1958 until his retirement in 1996, a member of First Baptist Church of Fredonia where he served as a deacon for 60 years, a Sunday School teacher and a choir member. He was past director of Caldwell County Hospital, a 50-year charter-member and president of the Fredonia Lions Club and a member of the American Le-

gion. Brasher was also a graduate of the Kentucky School of Banking.

Surviving are his wife, Doris Oliver Brasher of Fredonia; a daughter, Kimberly Brasher Brown and husband Barry of Princeton; a grandson, Aaron Brasher Brown and wife Jennifer of Kuttawa; a granddaughter, Chelsey Brown Farless and husband Clay of Princeton; and four great-grandchildren, Mitchell Brown, Barrett Brown, Parker Brown and Lily Farless.

He was preceded in death

by five sisters, Louise Smith, Naomi Padon Parish, Katherine Thompson, Mary Lou McCormick and Bonnie Buchanan.

Visitation will be from 4 to 8 p.m., Friday at Morgan's Funeral Home. Funeral services will be at 11 a.m., Saturday, Nov. 26 Morgan's Funeral Home in Princeton. Burial will follow in the Fredonia Cemetery.

Memorials may be made to Pennyroyal Hospice Incorporated, 220 Burley Avenue, Hopkinsville, KY 42240.

Give Thanks

May your plate be filled with an abundance of blessings at this special time of year.

Your trust and support mean so much to us and we wish you all the best.

Happy Thanksgiving

**MYERS** 713 E. Bellville St.  
Funeral Home Marion, Kentucky  
(270) 965-0110

Obituary Line  
(270) 965-0155



One-year-old Asher Blake and his grandmother Angie Way of Marion took advantage Friday of what may have been the last summerlike day of fall to enjoy the playground equipment at Marion-Crittenden County Park. Temperatures last week approached the 80-degree mark, but this week has been much more seasonable. The park has now been winterized. Water was turned off and restrooms closed Sunday. They will not re-open until spring. Meanwhile, a portable toilet has been placed at the park.

**HENRY & HENRY**  
MONUMENTS

Our family serving your family since 1881

**Henry & Henry Monuments**

626 U.S. 60 E. Eddyville, KY 270-388-1818	207 Sturgis Rd. Marion, KY 270-965-4514	4860 Old Mayfield Rd. Paducah, KY 270-534-9713
---	---	--

*With a beautiful facility, a fully licensed staff, and services to fit most any budget, why go anywhere else?*

For over 113 years Boyd Funeral Directors has been helping the families of Livingston, Crittenden and surrounding counties strike a balance between quality and price. With services starting at \$1,795, why not let us serve your family.

**Serving ALL of Livingston & Crittenden Counties since 1902**

 <b>Charles Fox</b> President/Owner Funeral Director & Embalmer	 <b>Andrew S. Fox,</b> Vice President/Owner Funeral Director & Embalmer
---	---

*Boyd Funeral Directors*

— & CREMATION SERVICES —

(270) 988-3131 • 212 E. Main St • Salem, Ky 42078

**www.boydfuneraldirectors.com**

respect what matters.  
honor that which you love most.  
revere the legacies left for us.

**GILBERT FUNERAL HOME**

117 W. Bellville, Marion, Kentucky • (270) 965-3171 • Obituary Line (270) 965-9835



# Doubting God’s perfect guidance is doorway to darkness

BY FELTY YODER

To doubt about God’s perfect leading in your life allows the darkness of unbelief to drift into your life.

You enter into dangerous areas where the prince of darkness rules, and he does not wish his subjects well. It does not take long before the darkness of doubt becomes the darkness of despair, resulting in an evil and deadly circle in your thought life.

You have to regard it very seriously if you sense that the spirit of discouragement wants to come in, because God has not given us the spirit. This spirit will make you incompetent to serve God because the ministry of the new covenant is a ministry of glory. The spirit of

God is the spirit of wisdom. Wisdom is first of all pure, and without doubt. It is pure from the darkness of unbelief and doubt.

An evil spirit went into King Saul when he let doubt enter into his heart concerning God’s perfect guidance in his life and David’s life. He undertook to commit the greatest foolishness in this satanic darkness, and as a result his greatness, his worthiness and his joy left him.

Doubting God’s perfect guidance in their own lives, and in others’ lives, has led many to become bitterly envious and has resulted in murder and all kinds of misery. It leads to grudging anxiety

and all kinds of strife and unrest. There is no peace and no rest where doubt prevails. On the other hand, faith opens the heart to God’s sunshine. For darkness has to give way to the light quickly. Faith in God’s perfect guidance leads us into a blessed rest, peace and joy. When one leaves everything up to Him who judges righteously, then one is spared much suffering and much evil. If Saul had understood to leave everything up to Him who judges righteously, he could have rejoiced from his heart with those who were rejoicing. He would have kept his royal state together with David, who was raised on high and

who was Israel’s sweet psalmist. Saul could have praised the Lord and rejoiced together with David in prophetic enthusiasm and he could have had much glory out of his life. But the prince of darkness, he who has come to murder, to steal and to destroy, managed to ruin everything for him.

Nothing that is in darkness can overcome the light and the weapons of light that are ours in Christ Jesus. It is a very great glory to be freed out eternally through Him from the horrible powers of darkness and the evil circle of the thought-life. Then the thoughts can dwell freely on everything that is good and revolve in blessed

paths of light where everything becomes brighter and brighter until the full day. Abraham believed God, and because he believed the blessings that came over him were as many as the stars in the heavens and the sands of the sea. It is impossible to please God without faith, but through faith and obedience we please Him so highly that the blessings are without end. They surpass everything you can imagine with your natural understanding.

Jesus is coming soon to show himself glorious and marvellous in all those who have believed and have obeyed His gospel. He will share all His incorruptible inheritance with them. Let us truly believe and rejoice over it.

(Editor’s note: Felty Yoder, of the Salem area, shares his views periodically in this newspaper. His opinions are his own and are not necessarily those of this newspaper.)

# Thanksgiving is true story of America’s beginning

Not only is fall my favorite time of the year, but it is also the true story of our beginning as a nation. It not only gives us the Thanksgiving holiday, but also a very important reminder why and how America became the greatest nation in history. This has always intrigued me, and faithfully fills my heart with thanksgiving.

It is so troubling to see Christmas signs, etc. before Thanksgiving even gets here. It tells me Thanksgiving doesn’t mean as much to businesses. They should be thankful they even have a business instead of trying to get money out of people for Christmas. Even Christmas does not mean what it is supposed to mean any more.

Going around the world and seeing firsthand how most of the rest of the world lives opened my eyes. The lack of true thanksgiving in the hearts of too many Americans has made me vehemently wish that all of them would be forced to go around the world and live in places I saw, and especially the places of which I’ve read.

The true ignorance in this country of the horrible assassinations, suffering, persecutions, starvation, bondage and slaughter that has been done to millions and millions of innocent people in communist Russia, North Korea, North Vietnam, Cuba, Hitler’s Germany and the kill-all-who-disagree-with-them in the Middle East is astonishing.

This ignorance is becoming very costly to America,

with all the rioting, killings, looting and destruction we see night after night in the streets of our cities. Why are they getting away with all of it? Why are our media and the power players backing all of this? I can tell you. It’s the order to further Obama’s fundamental transformation of America.

Raised in a close-knit family, I was brought up to understand loving and caring for each other. We were taught to love others and care for those who were as needy. Grandmother Underdown who was all about God, gave me a heart of thanksgiving as a child.

Every little kindness anyone ever showed me was, and is, so appreciated.

The wonderful and sad story of the Pilgrims and all they went through comes back to me every Thanksgiving. I put myself in the hull of that little ship with only five feet of headroom, the ferocious seas, the starving, sick and dying love ones on a strange and hostile shore, just to bring the Gospel of Jesus to me and mine.

How I praise God for the hearts and minds of their offsprings who were led by an all-knowing and future-seeing God, giving us the



Rev. Lucy  
TEDRICK  
Guest columnist  
Personal Views

powerful Declaration of Independence, the brilliant U.S. Constitution and Bill of Rights. They have given us the freedoms and prosperity for which no other nation on earth has ever dreamed.

As a 12-year-old girl being told how young boys, only 5 to 6 years older than myself, were going off to foreign lands to fight, and die, for me who none of them even knew, made me not only weep then, but at all the Veteran’s programs. Every time I saw the thousands and thousands of little white crosses as I traveled in many of those horrible places, it always hurt me.

Reading of the suffering of those Pilgrims, our military people from the American Revolution, the heart-wrenching Civil War, World War I, World War II, Koran, Vietnam and these tragic Muslim wars, leaves me too full of grateful thanksgiving to try to stomp, kill and destroy, when I had to live through eight years of watching our country go

down under a president who never put on a military uniform, ushered in ungodly, immoral laws and oversaw a Veteran’s Administration treating our returning veterans like his partner in crime’s deplorables, who were unredeemable.

May God put all ours and the world’s history back in our school books. The communists have taken out so much. All of us set the example before God of gratitude to His and all the millions before us who paved the way in their sacrifices to give us what we all have here in America today.

Michael “Shane” Travis

December 14, 1986 - November 20, 2012

The Voice We  
Loved Is Stilled,  
Your Memories  
Lives On

Shane you were so special to your family & friends who loved you dearly, you are in our thoughts and missed every day.

Son of John & Angie, Grandson of Brenda & Keith,  
Godson of Pa John & Granny, and Many Friends

Still Sadly Missed

DAD  
Roy Chandler  
March 21, 1910—December 25, 1976  
Gone 40 Years

MOM  
Emily Chandler  
August 20, 1912—November 23, 2004  
Gone 12 Years

SON  
Leroy Chandler  
December 19, 1944—September 24, 2002  
Gone 14 Years

GRANDSON  
Billy Roy Chandler  
January 19, 1976—October 18, 1996  
Gone 20 Years

IN LOVING MEMORY

Tommy, Effie Belle & Families

COME WORSHIP WITH US

**Crooked Creek Baptist Church**  
261 Crooked Creek Church Road, Marion, Ky.  
Sunday school, 10 am  
Sunday worship: Morning, 11 am | Evening, 5 pm  
Wednesday Bible study, 5 pm  
Bro. Mark Giltren, pastor  
Join us every fourth Sunday of the month for gospel singing at 5 pm

**Emmanuel Baptist Church**  
Captured by a vision...  
108 Hillcrest Drive, Marion | 270.965.4623  
Sunday School: 9:30 am | Sunday Worship: 10:45 am, 6 pm  
Wednesday Adult Bible Study, Children and Youth Activities: 6 pm  
Curtis Preuitt, pastor

**Mexico Baptist Church**  
175 Mexico Road, (270) 965-4059  
MexicoBaptist.org  
Minister of Youth Robert Kirby | Minister of Music Mike Crahtree  
**Pastor Tim Burdon**  
Sunday worship services: 10 am, 7 pm  
Sunday Bible study: 9 am  
Sunday discipleship training: 6 pm  
Wednesday worship service: 7 pm

**Marion Baptist Church**  
College and Depot streets, Marion • 965-5232  
• Sunday school: 9:30 a.m.  
• AWANA: 5:45 p.m.  
• Sunday worship: 10:45 a.m., 6:30 p.m.  
• Wednesday contemporary service: 8:15 a.m.  
• Wednesdays: 6:30 p.m.  
• RAs, GAs and Youthl Craze: 5:45 p.m.  
Pastor Mike Jones

**DEER CREEK BAPTIST CHURCH**  
Sunday Bible Study: 10 a.m.  
Sunday Worship: 11 a.m. & 6 p.m.  
Wednesday Bible Study: 7 p.m.  
Approx. 5 miles from the intersection of Hwy. 60 & Hwy. 297  
Phone 965-2220  
“Whatever It Takes!”

**SEVEN SPRINGS MISSIONARY BAPTIST CHURCH**  
Located between Dycusburg and Frances on Ky. 70  
Sunday School: 10 am  
Sunday Worship: 11 am, 6 pm • Wednesday: 7 pm  
Dr. Bobby Garland, pastor  
— Fundamental, Pre-Millennial, Independent —

**growing in grace**  
2 Peter 3:18  
**PLEASANT GROVE General Baptist Church**  
Located on Ky. 723, 4 miles north of Salem  
Sunday School 10 a.m. | Sunday Worship 11 a.m., 6 p.m. | Wed. 7 p.m.  
True Candee, pastor

**Unity General Baptist Church**  
4691 U.S. 641 • Crayne, Ky.  
Barry Hix, pastor • 365-5836 or 625-1248  
Sunday School 10 a.m. • Sunday Worship 11 a.m.  
Sunday Evening 6 p.m. • Wednesday Night Service 6 p.m.

**Barnett Chapel General Baptist**  
Barnett Chapel Road, Marion, Ky.  
Mike Jacobs, pastor  
Sunday school: 9:45 a.m.  
Sunday worship: 11 a.m.  
Sunday evening: 6 p.m.  
Wednesday night Bible study: 6 p.m.  
Barnett Chapel...where everyone is welcome.

**Marion General Baptist Church**  
341 W. Bellville St., Marion, Ky.  
Bro. Wesley Lynn, pastor  
Sunday School / 10 am  
Sunday Morning Worship / 11 am  
Sunday Evening Worship / 6 pm  
Wednesday Bible Study / 7 pm

**FIRST CUMBERLAND PRESBYTERIAN CHURCH**  
224 W. Bellville St. • Marion, Ky.  
Dee Ann Thompson, pastor • Sunday School 9:45 a.m. • Sunday Worship 10:45 a.m. • Sunday Night Worship Service 6 p.m.

**Piney Fork**  
CUMBERLAND PRESBYTERIAN CHURCH  
SCHOOL 10 am  
Worship 11 am  
Bible study 6 pm  
A new beginning, going forward and looking to the future  
Ky. 506 | Marion, Ky.

**Crayne Community Church**  
Crayne Cemetery Road  
Crayne, Ky.  
Bro. Tommy Hodge, pastor  
Sunday school 10 AM | Sunday worship 11 AM

**Hurricane Church**  
Hurricane Church Road off Ky. 135 West  
Bro. John Robertson, Pastor  
Sunday school, 10 a.m. • Worship, 11 a.m.  
Sunday and Wednesday evening services, 6:30 p.m.

**Frances Community Church**  
Bro. Butch Gray • Bro. A.C. Hodge  
Wednesday night prayer meeting and youth service - 7 pm  
Sunday school - 10 am • Worship service - 11 am





PHOTO BY DARYL K. TABOR, THE PRESS

# Sharing suggestions

Seventh-grader Maggie Blazina ranks what she thinks should be a priority of the local school system as fourth-grader Jaylea Bivins awaits her turn at Crittenden County Board of Education's Council of Councils meeting Nov. 15. The annual meeting brings together board members, school administrators and select teachers, parents and students to share ideas, concerns and successes among all levels of educational interests. An exercise for all participants asked them to rank what they believe should be the top three areas of focus in the school district.

ROMMEL ELLINGTON, JR.

Ellington  
DETAILING

WASH • WAX • UPHOLSTERY STEAM CLEANING

Our Gift Certificates Make A Great Present! Pick Yours Up Today!

FREE PICKUP & DELIVERY

119 W. Gum St.  
Marion, KY 42064

270.965.9090

PUBLIC NOTICE

Date: 12/15/2016

Local/State Board Public Hearing

The Crittenden County Board of Education and the Kentucky Board of Education have scheduled a local/state Board Public Hearing on the proposed Crittenden County District Facility Plan for Crittenden County School District on December 15th at 5:35 p.m. CDT, at the Crittenden County High School Library, located at 519 ½ West Gum Street, Marion, KY. The District Facility Plan lists the pending capital construction and/or renovation projects that the school district may undertake, and the priority order, if applicable, that projects will be initiated. Copies of the proposed District Facility Plan are available for examination by interested individuals at the Board of Education office, located at 601 West Elm Street, Marion, KY from 8 a.m. to 3:30 p.m. through 12/15/2016 and on the district website ([www.crittenden.kyschools.us](http://www.crittenden.kyschools.us)). Questions may be directed to Superintendent Vince Clark at (270) 965-3525. Those individuals wishing to comment on the proposed District Facility Plan may present oral or written comments at the Local/ State Board Public Hearing.

The local Board of Education, after due process, will forward the approved District Facility Plan to the Kentucky Department of Education for ultimate approval by the State Board of Education.

The local State Board public hearing is being scheduled in accordance with KRS 157.620, and regulated by 702 KAR 1:001.

## TURKEY

Continued from Page 1A

Last, you cut the turkey meat, and set the turkey meat on the table.

– Gunner

First I go get a turkey then I cook it then I do it over agin next I go chop it up last I get a turkey then I put it in the uven then when its dun I will laye it on a plate then I take it to the table then I eat the turk.

– Preston Conner

Furst take the turkey and pull the fethers out you will need to take oil on it put the turkey on 50 dgres. 8 hwrs.

– Maddie Watson

First my mom gits the stuf ait of it Then my mom cooks it then we my how flamiy eits it then we go up my nanes rond and we eit thar and we pas out prasn.

– Heidi Guess

I think my Nana cooks her turkey like this. First she puts all the spices in it. Like salt, pepper, and sage. Next I think she makes sure she seasons it right so she looks at the recipe. Then I think she roasts it in the oven. After that she takes it out, let it cook, cuts it and we eat it.

– Bella Williams

First the turkey has to sit in hot water so the ice will melt. Second you stuff the turkey with erbs and other things. Third after you stuff the turkey you put olive oil on the turkey. Fourth you set the timer then you put the turkey in the oven. Last after the timer goes off you take the turkey out of the oven then you set the turey on the table you sit done and eat the turkey with your family.

– Layken

First my uncle kills it. then, my aunt Debbie she will take all the feathers and skin off of the turkey. Next, aunt Debbie will cook it for a long time but I do not how how long. Finally she will put it on a big plate she will put it on the table.

– Shelby

My nana is the one that all day does the cooking. First, We cook the turkey in the uven. Then, you take it out to let it cool. Next, chek it with a tooth pick. Last, if it comes out cleen it is done. Finally, you can eat it if it is done.

– Emma

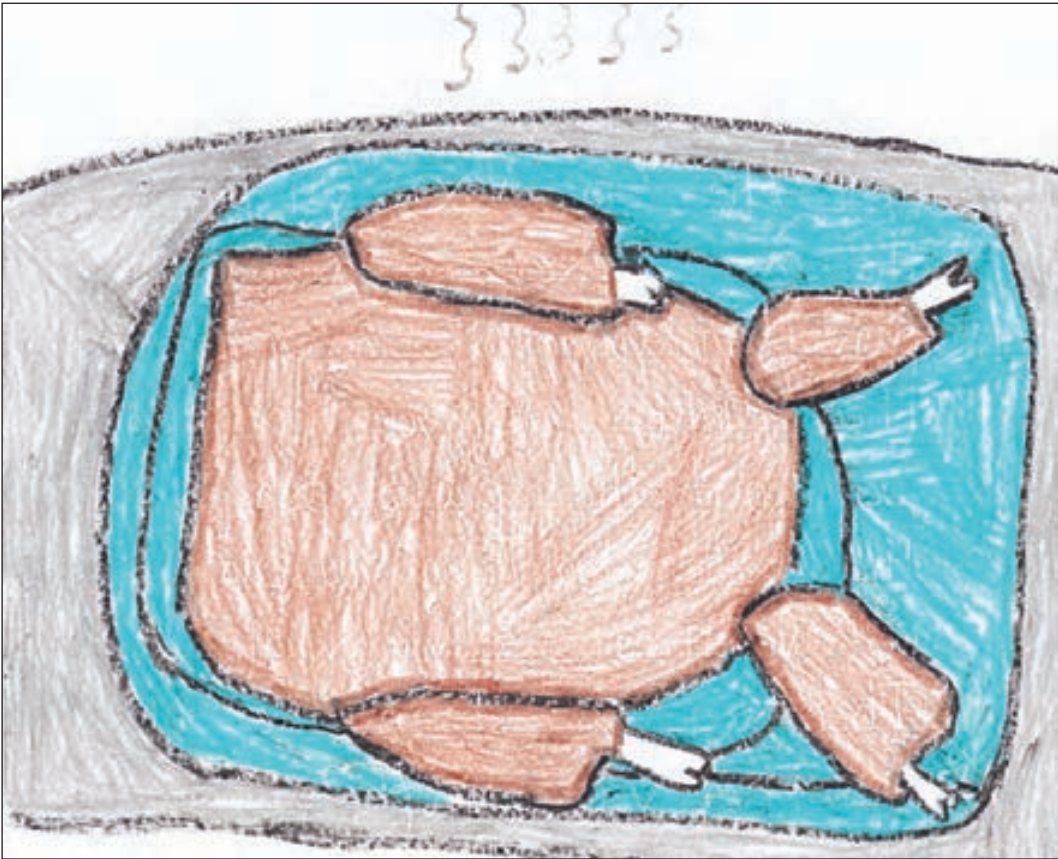
First, we put the turkey in the depfrier. Next, we lev the turkey in the depfrier for an hour. Last, after it is done take it ot of the depfrier to cool down.

– Logan

This is how to cook a dclsos Thanksgiving turkey. I think you should buy a turkey. I perfer to buy it at food giant. Next I will seson it with peprica, garlick power and spices and cook it. I will put it int he oven for 40 minutes and one hour. Last I put it on the table. With the food on the table. This is how I cook my delisos turkey for thanks-givin.

– Naomi Soloman

This is how to cook a delcose Thanksgiving turkey. First, you



DRAWING BY SARA MEDINA, CCES

Second-grader Sara Medina offers a somewhat anatomically-correct Thanksgiving turkey sitting in a pan after being cooked. Unlike some students who would kill their own bird, Medina buys hers from the store, bakes it in grease and serves it to the family.

should kill a turkey. I would go out to the woods and kill it with a shotgun. Next, you would have to bring it to the house. I would have to cook the turkey and then sesoning it. Last, you would take the turkey ou of the oven and then eat it. You would have to take it out of the oven with a mit so you don't get barned. This is how I cook my delcose turkey for Thanksgiving.

– Kylie Bloodworth

This is how to cook a delecace Thanksgiving turky. First we find a turky. Id buy the turky at daller general. Next cook the turky. We would cook the turky then eat it. Final step we would love the turky. Last we would cook the delecace turky.

– Trevor Sullivan

First I buy a turkey and bring it home. Next I cook the turkey for about 30 minuts. Then I take the turkey out of the oven and let it cool off. Last my family comes over and eat the turkey and then we say bye and my family goes home and we clean the mess up and go to bed after we are done.

– David Abshire

First you burn it. Next you put big long bones in the very botum of the turkey and you stick it in the turkey deep where you can only see some of it. Then you cut it up into four haves. Last you heat it so hot that you good not eat it for 20 minits and you wait for 20 minits. And when thats done you eat it.

– Avery Thompson

First, you kill a turkey and get the skin off of the turky. Next, you put the turky in the oven. Then, when it is done you take it out and let it cool Last, you call your par-ents or friends for a thanksgiving dinner or have a thanksgiving party.

– Ashton Brown

First you buy a Turkey from the store. Next you put the Turkey in a big roster. And put juosi in it so it

will not be hard. Then you cook it. And put it in cooked vetchtebls. last you put it on a big plate put a few row vechtebls arown the turkey and dump grave on it.

– Natilee Travis

Kill a turkey. Wer you get a bigger turkey. Then taket home and make sher you take the fethzr off. then poot grees on its befour you poot its in the uven four 105 menets. then take its alt uv the uven then you have a turkey.

– Ashlee

First you cut of the fethors. next you put in on a pan. next you put in on four 30 minets. next you check it to see if it is done next if it is done you can eat it nex see if it dose not have rabes.

– Trinity

1 you git its wings of 2 then put it in the aven for 10 minits 3 git out of the oven 4 put barbk-uwe on it 5 eat it

– Aiden

Go to the store and buy a turkey. Then go home and thaw it out. Rub it with salt and pepper. And rub it whith garlic. Then pre-heat the oven to 150 degrees. When the timer goes off. cover it with aliminam foil. Then put it in the oven for 2 hors. Then when the timer goes off get it out of the oven. Then let it cool of for about 30 mintites. When it is cook cut it up. Then eat it for thanksgiving and you got a turkey!!

– Morgan Stewart

Frist, you stuff a turkey with mash ptatoes. And put in the uven. Next at 3:15 take it out. Then spell CC Rockets on it. Last put Oreos, milk, pumpkin pie, Kebbler cookies, and spreklas and eat it.

– Kyndal Shouse

1st you need to keche a turkey and then kill it 2ek put a bone in it 3ed put it in the oven for 3 mins 4th let it cool off 5th you can de-crate it then eat it.

– Noah

LIFE IN CHRIST CHURCH

2025 US HWY 611 MARION, KY

CHRISTMAS

Simply Electric

Saturday Dec 3

Sunday Dec 4

6:30pm

TRI-RIVERS HEALTHCARE, PLLC

welcomes

Samantha Greer, APRN

Samantha is a 2003 graduate of Crittenden County High School and earned her bachelor's of science from Western Governors University in Salt Lake City, Utah. She received her Master's of Science in Nursing from South University, Savannah, Ga. in 2016 and a Master's of Science in Leadership and Nursing Management, from Western Governors University in 2013.

Greer will be seeing patients at:

**Marion Physicians Clinic**  
8 a.m. – 5 p.m.  
Monday, Wednesday & Thursday

**Salem Clinic**  
8 a.m. – 5 p.m.  
Friday

Marion Clinic:

308 S. Main St.  
Marion, Ky.  
(270) 965-4377

Salem Clinic:

141 Hospital Drive  
Salem, Ky.  
(270) 988-3298



# Basketball Special

The Crittenden Press Special Coverage  
Thursday, November 24, 2016



**Cassidy Moss**  
Senior - Guard



**Meredith Evans**  
Senior - Forward



**Kiana Nesbitt**  
Senior - Forward



**Amanda Lynch**  
Senior - Guard



**Francesca Pierce**  
Senior - Guard



**Madison Champion**  
Junior - Guard



**Mauri Collins**  
Junior - Guard



**Nahla Woodward**  
8th Grade - Forward



**Chandler Moss**  
8th Grade - Guard



**Matthia Long**  
8th Grader - Forward



**Christa Sisco**  
Freshman - Guard



**Ashton Binkley**  
Freshman - Forward



**Natalie Hutchings**  
Freshman - Forward



**Bobby Stephens**  
Senior - Guard



**Will Tolley**  
Senior - Guard



**Logan Belt**  
Junior - Forward



**Tyson Steele**  
Junior - Center



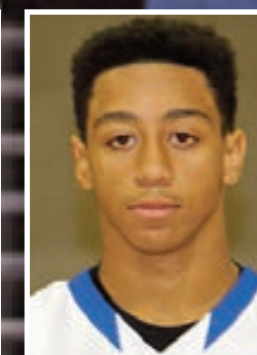
**Hunter Boone**  
Sophomore - Forward



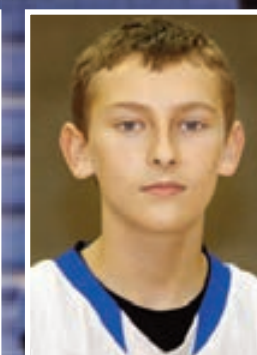
**Gavin Dickerson**  
Sophomore - Center



**Sean O'Leary**  
Sophomore - Forward



**Devon Nesbitt**  
Sophomore - Guard



**Erik O'Leary**  
Freshman - Guard



**Jayden Carlson**  
Freshman - Forward



**Gabe Mott**  
8th Grade - Guard



**Tyler Boone**  
8th Grade - Forward



**Preston Turley**  
8th Grade - Center



**Braxton Winders**  
8th Grade - Guard

**A Good Game Plan  
Involves A Trip To  
Marion's Dairy Queen**



**Grill & Chill**

213 Sturgis Rd.  
(270) 965-4261

**GO BIG BLUE!**

**Keep Your Eyes  
On The Ball**

Call For Your Appointment Today

**MARION EYECARE CENTER, PLLC**

713 S. Main Street, Marion, KY  
270-965-5280  
Adria N. Porter, O.D.

**Have A  
Great  
Season  
Rockets!**

Darben Plaza Shopping Center  
Marion, KY  
(270) 965-5201

There's more reason than ever to cheer on your Rockets! For the 2016-2017 School Year, Farmers Bank will be giving \$10.00 for every 3-pt shot made at home by your Rocket Varsity Teams. The donations will go to the Crittenden County Booster Organization, which represents 17 official school booster committees from all Crittenden County Schools.

Check out our  
Instant Issue Debit Cards  
Featuring  
Crittenden County  
Rockets



**Farmers  
Bank & Trust**  
www.Farmers247.com  
1-855-430-BANK



Find us on  
Facebook  
Member FDIC



**BEST OF LUCK THIS SEASON!**

NOW OFFERING  
**LASER THERAPY**

Large & Small Animal Medicine & Surgery

**Crittenden County Animal Clinic**



Thomas G. Shemwell, D.V.M.

3841 US Hwy. 60 West, Marion, Ky., 42064  
(270) 965-2257

24-Hour Emergency Service (270) 965-2777



# Middle School Rocket Basketball



8th Grade Lady Rockets

Crittenden County Middle School girls eighth-grade basketball players (are front from left) Lilly Perryman, Kacie Easley, Chandler Moss, Matthia Long; (back) manager Mary Holeman, Lilli Hayes, Jaelyn Duncan, Nahla Woodward, Destiny Knight, Kate Keller and manager Hailley Mathieu.



7th Grade Lady Rockets  
Crittenden County Middle School girls seventh-grade basketball players (are front from left) Macie Hunt, Riley Smith, Taylor Guess; (back) Hailley McCann, Natalie Boone, Raylee Belt, Grace Driskill and Addie Hatfield.

7th Grade Rockets  
Crittenden County Middle School boys' seventh-grade team members are (front from left) Ben Evans, Tanner Beverly, Luke Crider, Logan Young, Tucker Sharp, Logan Bailey, Ethan Curnel, (back) coach Tyler Coleman, Hayden Adamson, Trace Derrington, Maddox Carlson, Coleman Stone, Dane West and Peyton Purvis.



8th Grade Rockets  
Crittenden County Middle School boys eighth-grade basketball players are (front from left) Gabe Mott, Douglas Ford, Braxton Winders, Daniel Gipson, Cameron Suggs, Preston Turley, (second row) Jasper Morrison, Dillon Stinnett, Tyler Boone, Ben Dobyns, Caden McCalister, (back) coach Bryce Winders, Chase Stevens, Lance Kayse, Jimmy Newland, Xander Tabor and Trace Adams.



CCHS Cheerleaders  
Crittenden County High School Cheerleaders are (front from left) Brittany Minton, Bristen Holeman, Sydney Leibenguth; (second row) Cortne Curnel, Jaylin Blackburn, Sydney Coomes, Shelby Wallace, Jenna Potter, Shelby Brown; (back) Daelyn Hardin, RheaVynn Tabor, Hannah Cooksey, Ellie McGowan, Trinity Hayes, Kirsten DeBoe and Shea Martin.



CCMS Cheer  
Crittenden County Middle School cheerleaders are (front from left) Hannah Faughn, Addyson Faughn, Hadlee Rich, Ryleigh Tabor, Callie Brown; (middle row) Morgan Johnson, Taylor Stoner, Jessie Potter, Mallory Lynn, Aliyah Frutiger; (back) Kenlee McDaniel, Raina West, Belle Minton, Emma Waters.

**We Are On The Way To A Winning Season Go Blue!**



**FRAZER & MASSEY**  
ATTORNEYS AT LAW

**ROBERT B. FRAZER**  
**ROY MASSEY IV**  
W. S. Greenwell *Of Counsel*  
Richard H. Peek, Jr. *Of Counsel*

200 SOUTH MAIN STREET  
P.O. BOX 361 • MARION, KY 42064  
TELEPHONE 270.965.2261 • FACSIMILE 270.965.2262  
www.frplaw.net

Proud to be the Crittenden County School Board Attorney

## Best of Luck Rockets & Lady Rockets for a Successful 2016-2017 Season!

Mobile Banking App Now Available

**FREDONIA VALLEY BANK**  
"122 Year Tradition of Friendly Service"  
602 Cassidy Ave.  
(270) 545-3301  
Mon.-Thur. 8:30 a.m.-4 p.m.  
Fri. 8:30 a.m.-4:30 p.m.  
Drive-Thru Window Open Fri. Until 5:30 p.m.  
Drive-Thru Window Open Sat. 8:30 a.m.-Noon

www.fredoniavalleybank.com  
Member FDIC

**LYON COUNTY BRANCH**  
"Full Service Banking"  
226 Commerce St.  
(270) 388-2265  
Mon.-Thur. 8:30 a.m.-4 p.m.  
Fri. 8:30 a.m.-4:30 p.m.  
Drive-Thru Window Open Fri. Until 5:30 p.m.  
Drive-Thru Window Open Sat. 8:30 a.m.-Noon





The 2016-17 Rockets are (front from left) Braxton Winders, Gabe Mott, Will Tolley, Bobby Stephens, Gavin Dickerson, Devon Nesbitt, Erik O'Leary, (back) manager Harley Wesley, Michaela West, Jayden Carlson, Sawyer Towery, Logan Belt, Tyson Steele, Sean O'Leary, manager Brittany Wall and manager Lynzee Lynn.

# Hodge confident that team will improve as season progresses

STAFF REPORT

To borrow – and tailor – a proverbial phrase from Forrest Gump: Rocket basketball is like a box of chocolates.

It couldn't be more true this fall as Denis Hodge shoves off for his sixth season as head coach.

"We're not exactly sure right now what we're going to get," Hodge said.

Despite winning just five games a year ago, the coach says this past offseason hasn't included much introspection or misery. Instead, he and the boys have rolled up their collective sleeves and worked to get better. They've been in the weight room, worked on improving speed and agility and of course spent a lot of time shooting the basketball. It's all part of Hodge's grand scheme to have a sweet-tasting box of candy ready for Rocket fans by stretch time, if not sooner.

The coach asks for a little patience early on, however. One of the team's best scorers is already on the shelf with a broken hand and it will be a while before the football players get into true basketball mode.

For his part, the coach has reteoled the schedule, adding more small-school opponents like Gleason, Tenn., Fulton City, Ballard Memorial, Carlisle County, Christian Fellowship, Community Christian and Todd Central to the non-district slate for 2016-17.

"It's funny who answers the phone after you win just five games," Hodge said with a grin, pointing out that some of those teams had dropped the Rockets from their schedules in the recent past. Now, though, they are more than willing to sign back up after Crittenden finished with the second worst record in the region last season.

Personnel wise, the Rockets have a handful of returning starters or players who saw considerable action during the previous campaign.

At point guard will be senior Bobby Stephens. He has an uncanny understanding of the game and its most intricate concepts. He's a crowd favorite because of his hustle and can touch off threes when left open. Stephens closely personifies the entire Rocket roster. At 5-foot-5, he's not going to be the biggest guy on the floor, but Hodge says his point guard has learned to use his size to an advantage. Stephens is particularly strong for his frame, Hodge says, and he's learned how to get under taller opponents and cause them trouble.

Senior Will Tolley was just coming of age last year when he suffered a season-ending leg injury in early January. Tolley is the team's best defender, he's quick and can shoot the long ball. Tolley will be one of the squad's top scorers. The coach needs Tolley getting to the basket often in transition, ahead of opposing defenses.

The skipper says the team will have to be creative offensively.

"We will need to get some putbacks, score in transition and at the foul line," he said.

Last year, Crittenden struggled to score when teams were able to set up their defense and force the Rockets into a half-court game.

Logan Belt, a junior who turned out to be a big scorer last season, will be the starting wingman when he heals. Belt let his temper get the best of him during a recent practice and smashed the wall with his fist.

"He broke his hand," Hodge said. "Now we have some new team rules about those kind of things."

Belt is one of those guys Hodge wants to see become more versatile on offense.

"He can't just rely on his jumper," the coach said.

Belt should be back in action by Christmas. Until then, sophomore Sawyer Towery will get some key playing time. Towery is a gem in the making, Hodge



Denis Hodge  
6th-year coach  
56-93 overall  
5-24 last year

said. His grandfather was an NBA player and Towery inherited a natural ability to score.

At the other forward will probably be sophomore Hunter Boone once he's conditioned for basketball. Boone, like Devon Nesbitt and Gavin Dickerson, is coming straight off the football field. All three will figure into the top seven when they're game ready.

Boone has a nice touch on offense and will run the point when Stephens needs a breather.

Dickerson will be the center. His tenacity and physical play make up for what he lacks in height under the rim. At 6-foot, he will certainly be among taller timber most of the time but Dickerson is a battler. He scores well by scrapping points around the round rim, but don't be surprised to see the center pop out to the perimeter for some threes.

Junior Tyson Steele has made big improvements during the offseason, Hodge said, and will get an early opportunity to show his abilities.

Nesbitt will be one of the first off the bench. He's perhaps the best pure athlete on the team and plays with a great deal of doggedness, especially when it comes to defense.

Junior Sean O'Leary, freshmen Erik O'Leary (brothers) and Jayden Carlson may also get some early game time with the varsity team while the coach is figuring out what he has off the bench.

The coach believes all of the pieces will start falling into place after a few weeks of game-speed action.

Fans may also get a glimpse of the future. Promising eighth-graders Preston Turley, Gabe Mott, Tyler Boone and Braxton Winders are on the high school roster and might even get on the floor this season. Turley, who is smooth around the basket at 6-foot-3, has perhaps the best chance to make an impact.

Around the region, little has changed. Trigg County has won the last four district championships and Hodge says until someone proves Payton Croft's Wildcats aren't the favorite, they will wear the label.

Livingston Central has a strong returning corps and Lyon County will be athletic. There will be no easy games


in the district for Crittenden County; however, Hodge likes his team and likes its chances of surprising some opponents this season.

"A whole lot will depend on how we play," Hodge explains. "If we play with emotion and at a good pace we could be okay. We will have to create scoring opportunities with our defense, scoring in transition before defenses can set up on us."

The Rockets will try to trap and use defensive pressure in a variety of ways. Expect a regular barrage of long-range shooting as the Rockets hope to deflect attention from its lack of height on the baseline.


"The goal we have for this team is for us to be as good as we can be," Hodge said, stopping short of any unrealistic objectives, but clearly convinced that the boys will improve as the season moves ahead.

Wishing the  
Rockets &  
Lady Rockets  
a Successful  
2016-2017  
Season!



320 S. Main St.  
Marion, Kentucky  
(270) 965-9007





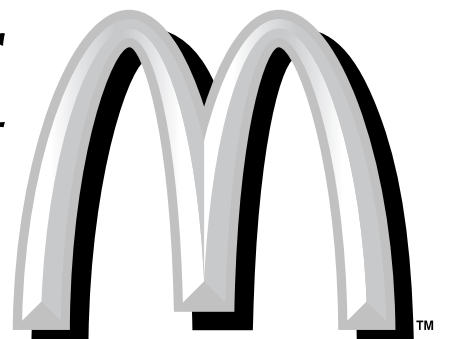
GOOD  
LUCK  
ROCKETS!

REBECCA J.  
JOHNSON  
CRITTENDEN COUNTY  
ATTORNEY

217 W. Bellville St., Marion, KY • 270-965-2222

GOOD LUCK  
ROCKETS!


From your  
friends at



i'm lovin' it™

Marion, Princeton,  
Eddyville & Hopkinsville

Joe & Kathy McEnaney  
Owner/Operators



Rockets and Lady Rockets  
Best of Luck for a  
Victory in Every Game!

NEW PATIENTS WELCOME  
APPOINTMENTS PREFERRED  
INSURANCE ACCEPTED

H. Gregory Maddux M.D., F.A.A.F.P.	Alicia Clark A.P.R.N., C.F.N.P.
Gary V. James M.D., F.A.A.F.P.	Lee Anna Boone A.P.R.N., C.F.N.P.
Jonathan Maddux M.D., F.A.A.F.P.	Rashelle Perryman A.P.R.N., FNP-C



Family Practice Clinic, P.S.C.

Marion, KY • (270) 965-5238







The 2016-17 Lady Rockets are pictured (front from left) Mauri Collins, Meredith Evans, Francesca Pierce, Kiana Nesbitt, Cassidy Moss, Amanda Lynch, Madison Champion, (back) assistant coach Jessi Sigler, Christa Sisco, Matthia Long, Nahla Woodward, Natalie Hutchings, Chandler Moss, Ashton Binkley and head coach Shannon Hodge.

# Moss leads Lady Rockets’ district challenge

**STAFF REPORT**  
With Cassidy Moss in the lineup, Crittenden County isn’t going to slip up on anyone this season.  
Moss is widely considered one of the top five players in the region. She’s a two-sport college prospect – basketball and softball – and is closing in on the school’s all-time girls’ scoring record.  
So there is no secret where the Lady Rockets get their offensive muscle. Problem is, she’s also the team’s best defender, which can be exhausting at times.  
With a bit more help from the rest of the forces, Crittenden County will be a district contender and perhaps more.  
The Lady Rockets are certainly considered a favorite to claim the Fifth District crown. They’ve played second fiddle to Lyon County the past two years, but the Lady Lyons lost a great deal of firepower to graduation. Livingston Central is expected to be much improved under new skipper Jim Parks and armed with junior stars Tabby Padon and Kaylyn Campbell. Trigg County is retooling with a new coach, too. The Lady Wildcats will feature mostly underclassmen on Cory Coble’s first-year team.  
Teams are going to key on Moss, that’s for certain. So 24-year coach Shannon Hodge knows there will need



**Shannon Hodge**  
24th Season  
Overall record 257-347  
15-16 last season

to be at least some offensive collaboration in order to reach this year’s goal.  
“Our girls are in agreement that they want the district nets,” Hodge said. “They feel like they should have had them last year and maybe even the year before. Their expectations were a little higher than we performed.”  
The girls were 15-16 last season and lost in the regional tournament to Madisonville. Hodge said there were a few games that “got away.” Otherwise, the campaign might have been different, certainly a winning season was expected.

Last year’s record was seventh best in the region and already some early forecasters have Crittenden picked seventh again.  
Hodge thinks this team can be better and a whole lot is riding on Moss’s shoulders, but she can’t be the only burden bearer.  
“Cassidy can do it all,” Hodge said. “We should have the kids around her and they expect a lot out of themselves.”  
Moss who has scored 1,273 in her career – which started as an eighth grader – needs 356 points to become the Lady Rocket all-time scoring leader. Jeanne Hinchee (1973-78) is the current record holder. Between Moss and Hinchee are her coach, who scored 1,534 in her career that ended in 1985; the coach’s daughter and assistant coach Jessi Hodge Sigler, who scored 1,502; and Morgan Dooms and Chelsea Oliver. Moss scored 485 as a junior, so she’s perfectly capable of getting the record.  
Flanking Moss on offense will be senior Amanda Lynch and junior Madison Champion. They both emerged as scorers last year, but will be needed to be more consistent.  
Lynch has long arms and legs and makes things happen defensively. She has worked hard on her offense during the offseason, improving her jump shot from

about 15 feet out to the three-point line.  
Champion has a similar frame and is very versatile. She can play just about anywhere on the floor and is a good rebounder.  
“She can take you one on one and score and she’s a competitor,” Hodge said.  
Senior Kiana Nesbitt will handle a whole lot of the inside work. She runs the floor very well with her 5-foot-9 frame and defends the post well. If her confidence improves on the offensive end, she could average double figures nearly every game and be a key component in the girls’ success.  
The other two seniors, Francesca Pierce and Meredith Evans bring different skill sets to the table. Like the other seniors, they’ve been key contributors since their freshman seasons or before. Pierce is a spot shooter and natural leader. She can be a solid defender and runs the floor very well. Evans is the inside force. At 5-9, she could be physical presence under the basket and has nice touch out to about 15 feet.  
Junior Mauri Collins could be the wildcard. She’s the coach’s niece and has spent a lot of time in the gym. Her game has improved as she’s gotten stronger. At 5-2, she’s learning to use her size as an advantage against much taller

players, the coach said. Collins has a nose for the ball and can score in multiple ways.  
Beyond those upper classmen there probably isn’t a whole lot of varsity help until you get down to the middle schoolers. Nahla Woodward will be a force in years to come. Just an eighth-grader, she logged a handful of varsity minutes last year. Chandler Moss, Cassidy’s eighth-grade sister, might also figure into the team’s

depth.  
There is no secret that Cassidy Moss will be the centerpiece on the team, but the trimmings will determine how far the team goes this season. Consistent scoring from the rest of the cast will create big problems for opponents.  
“There are no excuses this year,” Hodge said. “We certainly can’t say we’re young and inexperienced. Our top seven are interchangeable and they each have a role.”

## ROCKETS & LADY ROCKETS

Best wishes on a winning season.

### Bobby Stinnett Used Cars

331 Sturgis Rd. • Marion, KY • (270) 965-9894

## ANIMAL PRACTICE

of Marion, PLLC

### HOSPITAL, BOARDING & GROOMING

(270) 965-1600

### Have A Great Season Rockets and Lady Rockets!

### Small Animal Medicine & Surgery

#### Dr. Stephanie Call

Carolyn Fralick, Groomer • Susan Musser, Groomer  
Deanna Muff, Vet Tech • Mandy Curnel, Vet Tech  
Jamie McGaugh, Receptionist

### 24 Hour Emergency Service

1597 U.S. 60 West • Marion, Kentucky

## GOOD LUCK ROCKETS!

### We Have Rocket Gear

**Superior Trophies**  
Screen Printing  
& Embroidery  
Mike & Denise Hamilton  
216 South Main Street  
Marion, KY 42064  
270.965.4310  
800.34.AWARD  
Cell 270.704.0370  
superior\_trophies@hotmail.com

### INSURE A SUCCESSFUL SEASON WITH HARD WORK AND DEDICATION!

### YARBROUGH TABOR GOODWIN

Kentucky National Insurance Company

113 West Gum St. • P.O. Box 368 • Marion, KY  
Phone (270) 965-3133 • Fax (270) 965-2130  
YTG@kynet.biz

### Have A Great Season Rockets and Lady Rockets!

### Glenn’s Apothecary

Located in Family Practice Clinic Bldg. • Marion, KY  
(270) 965-4101

### Glenn’s Prescription Center

119 E. Main St., Salem, KY  
(270) 988-3226

### Good Luck Rockets!

Great Meals Start With  
Quality Meats

31 CUTS OF LOCALLY-GROWN, GRAIN-FED BEEF

We also have:  
Pork, Chicken, Beef and Seafood

From our farm to your table!

### P AND H CATTLE CO.

EDDYVILLE-KENTUCKY

270-625-0610

PANDHCATTLECO.COM Locally Grown Beef

647 West Dale St., Eddyville, Kentucky  
Hours: Monday thru Friday 10 a.m.-6 p.m.  
and Saturday 9 a.m.-5 p.m.

## Go Rockets & Lady Rockets

We’re behind you all the way!

515 S. Main Street  
Marion, Ky.  
(270) 965-4533  
6 AM - 10 PM  
7 Days a Week



ROCKETS  
Basketball  
Varsity Roster

Player	No.	Gr.	Ht.	Wt.	Pos.
Logan Belt	14	11	6-1	170	F
Hunter Boone	32	10	6-0	210	F-G
Tyler Boone	25	8	5-8	165	F
Jayden Carlson	23	9	6-2	170	F
Gavin Dickerson	10	10	6-0	215	C
Gabe Mott	21	8	5-5	120	G
Devon Nesbitt	20	10	5-8	165	G
Erik O'Leary	4	9	5-9	135	G
Sean O'Leary	11	10	5-10	185	F
Tyson Steele	11	11	6-1	185	C
Bobby Stephens	2	12	5-5	145	G
Will Tolley	5	12	5-8	160	G
Sawyer Towery	3	10	5-11	170	F
Preston Turley	31	8	6-3	215	C
Braxton Winders	24	8	5-9	185	G

Rocket Schedule

Nov. 29	Christian Fellowship	H
Dec. 2	Trigg County	A
Dec. 6	Caldwell County	A
Dec. 9	Lyon County	H
Dec. 10	Hardin County, Ill.	H
Dec. 13	Union County	H
Dec. 16	Livingston Central	A
Dec. 17	Webster County	A
Dec. 20	Gleason, Tenn. at Fulton	
Dec. 21	Fulton City at Fulton	
Dec. 29	Ballard Memorial	H
Dec. 30	Carlisle County	H
Jan. 3	Hopkins Central	H
Jan. 6	Lyon County	A
Jan. 7	Community Christian	H
Jan. 10	Dawson Springs	H
Jan. 13	Trigg County	H
Jan. 14	Hardin County, Ill.	A
Jan. 17	Livingston Central All A	A
Jan. 24	Union County	A
Jan. 27	Livingston Central	H
Jan. 28	Madisonville	H
Jan. 31	Webster County	H
Feb. 2	Dawson Springs	A
Feb. 3	Todd Central	A
Feb. 6	Fort Campbell	A
Feb. 7	Caldwell County	H
Feb. 10	St. Mary	H
Feb. 14	Hopkins Central	A
Feb. 17	Fort Campbell	H

District Tournament at Trigg County



Rocket Boys

Under Coach Hodge

2011-12	.....11-20
2012-13	.....15-16
2013-14	.....9-21
2014-15	.....16-12
2016-17	.....5-24
Total	.....56-93

Lady Rockets

Under Coach Hodge

1993-94	.....6-19
1994-95	.....15-13
1995-96	.....11-14
1996-97	.....17-9
1997-98	.....12-14
1998-99	.....14-13
1999-00	.....11-15
2000-01	.....11-16
2002-03	.....6-18
2003-04	.....12-13
2004-05	.....11-16
2005-06	.....16-10
2006-07	.....6-20
2007-08	.....13-12
2008-09	.....11-9
2009-10	.....13-14
2010-11	.....21-9
2011-12	.....4-24
2012-13	.....4-23
2013-14	.....7-18
2014-15	.....16-12
2015-16	.....15-16
Total	.....257-347

CCHS GIRLS  
Basketball  
Varsity Roster

Player	No.	Gr.	Ht.	Pos.
Meredith Evans	24	12	5-9	F
Amanda Lynch	41	12	5-9	G
Cassidy Moss	43	12	5-6	G
Kiana Nesbitt	32	12	5-9	F
Francesca Pierce	13	12	5-5	G
Madison Champion	1	11	5-8	G
Mauri Collins	11	11	5-2	G
Ashton Binkley	4	9	5-3	F
Natalie Hutchings	15	9	5-7	F
Christa Sisco	20	9	5-0	G
Matthia Long	35	8	5-6	F
Chandler Moss	23	8	5-6	G
Nahla Woodward	44	8	5-9	F



Cassidy Moss needs 356 points to become the all-time Lady Rocket leading scorer.

Moss Math 1,273pts

POINTS	YEAR	AVERAGE
485	Junior	15.6
348	Sophomore	12.4
280	Freshman	11.2
160	8th Grade	5.9

GOOD LUCK ROCKETS!

JONES 88 DIP

DAYTIME DELIVERY  
Mon. - Fri. 11 a.m. - 2 p.m.

NIGHT DELIVERY  
Mon. - Sat. 4 p.m. - 8 p.m.

We Accept Credit Cards

ONLINE ORDERING & DELIVERY AVAILABLE THRU GRUBHUB  
113 STURGIS RD. • MARION, KY • 270-965-4538  
Mon.-Sat. 6 a.m. - 8:30 p.m. • Sunday 7 a.m. - 2 p.m.

Good Luck Gavin!

Have a great season!

Full Body Fitness Studio

For more information, Call Serena Dickerson at (270) 704-1871 or email esdickerson96@kynet.biz

GO ROCKETS

GOOD LUCK ROCKETS!

MYER'S Auto Parts

426 S. Main St., Marion, KY  
(270) 965-3104

Marion True Value®

223 Sturgis Road, Marion, Kentucky  
(270) 965-5425

Hardware, Lumber and Fabric Center

WE'RE Just Ask ROCKET BOOSTERS!

HAVE A GREAT SEASON ROCKETS!



CRITTENDEN COUNTY FARM BUREAU

109 Court St., Marion, KY • (270) 965-4624  
*Larry Davidson, Ricky Brown, Debbie, Melinda & Mary*

BEST WISHES FOR A WINNING SEASON

Henry & Henry Monuments

Since 1881

207 Sturgis Road, Marion • (270) 965-4514

GO BIG BLUE!

Bumper to Bumper®  
Auto Parts Specialists

CRITTENDEN AUTO PARTS

108 Sturgis Road  
Marion, Kentucky  
965-3166

WE'RE ROCKET BOOSTERS ALL THE WAY

GO BIG BLUE!

H&H SUPPLY

820 S. Main Street  
Marion, Kentucky  
(270) 965-2700

M-F • 7 a.m.-5:30 p.m.  
Sat. • 8 a.m.-12 p.m.

RILEY GO ROCKETS!

TOOL & MACHINE

WELDING • FABRICATING • STEEL SALES

531 Moore Street • P.O. Box 687 • Marion, KY  
270-965-3005 • 270-965-2287 Fax  
trileymachine@bellsouth.net

SUPPORTING ROCKET BASKETBALL

GILBERT FUNERAL HOME

117 W. Bellville, Marion, Kentucky  
(270) 965-3171  
Obituary Line (270) 965-9835  
gilbertfuneralhome@yahoo.com

YOUR GOLDEN RULE FUNERAL HOME

The Best Is What You Get From Our Rockets & Lady Rockets

Call our Deli for Holiday Trays. We can cater for you.

Quality service and value are all you can expect from your... MARION

Food GIANT

100% Employee Owned

Darben Plaza Marion, KY  
(270) 965-4565

"Where your neighbors are the owners"

GO ROCKETS!

Beavers CAR WASH

AUTOMATIC - SPOT FREE RINSE

301 SOUTH MAIN, MARION, KY.  
(270) 965-3151  
Jerry, Kristi & Kurt Beavers

Good Luck ROCKETS!

LOGGING FOR THE LANDOWNER

SUTTON Logging

Certified Master Logger FULLY INSURED

(270) 836-7845 MIKE SUTTON  
(270) 871-7537 JUSTIN SUTTON







# Classifieds

The Crittenden Press

The Press Online  
CrittendenPress.Blogspot.com



**The Crittenden Press**  
125 E. Bellville St., P.O. Box 191  
Marion, KY 42064 • 965.3191  
information@the-press.com

Open weekdays  
9 a.m. to 5 p.m.



Advertising deadline  
is 5 p.m., Monday

Prepaid ads of 20 words or less are \$6 for one week, with a 10-cent charge for each word over the initial 20. Run the same ad for consecutive issues for only \$3 each week. Now, all regular classified ads are placed on our Web site, [www.the-press.com](http://www.the-press.com), at no extra charge.

You can also reach more than one million readers with one call! Contact the classified department for more information about placing a 25-word classified in 70 newspapers for only \$250.

It is the policy of The Crittenden Press Inc., to fully comply with the Fair Housing Act and to never knowingly publish advertisements that discriminate on the basis of race, color, religion, national origin, sex, disability or family status. If you believe an advertisement published in this newspaper is discriminatory, please contact the publisher immediately at 965.3191.

All phone numbers listed for ads on this page are within the 270 area code unless otherwise noted.

## for sale

Pecans, \$11 as usual, pieces and halves. Jagged Edge. (9t-22-c)es

Sale on Porta/Grace Number 1 metal roofing, siding and trim. 40-year warranty. Available in 16 colors. We also sell cover sheets, price low as \$1 foot. Call Grays, 907 Hopkinsville Street, Princeton, Ky. (270) 365-7495. (13t-34-p)

Oak table with 6 chairs. \$200. (270) 988-2796. (2tp22)

## agriculture

HAY FOR SALE, round bales. Call (270) 969-8600. (13t-33-p)

Looking for crop land to lease in Caldwell, Crittenden, Lyon and surrounding area for 2016. Pay competitive lease, good steward to your land and will offer references. Call Roy Crayne (270) 625-6622 and leave message. (20t-40-p)

For sale: milk cows, heifers, bulls, grass-fed beef. Cave In Rock, Illinois, (618) 289-4643. (4t-21-p)

## animals

AKC English Bulldog puppies, parents on site. One-year health guarantee. (270) 994-3915 or (270) 335-3943. (4t-22-p)

ADOPTING A PET from Crittenden County's Animal Shelter gives an animal a second shot at life. Animals can now be seen online at [crittendenshelter.blogspot.com](http://crittendenshelter.blogspot.com). The shelter holds animals from Crittenden, Lyon and Livingston counties, so be sure to check with the shelter online or at (270) 969-1054 for your lost or missing pet. (nc)

## for rent

House for rent, refrigerator and stove furnished, washer and dryer hookup, wood floors, garage pick-up included. If interested, call (270) 969-1126. References helpful. (1t-21-p)

**MG &**

- plumbing
- septic tanks
- dirt work

270-704-0530  
270-994-3143

**TINSLEY'S ELECTRICAL SERVICE**  
*Residential & Commercial Wiring  
Repair Work • Mobile Home Electrical Hook-Ups*

Larry Tinsley P.O. Box 502  
Home: (270) 988-2638 Salem, KY 42078  
Cell: 559-5904 Fax: (270) 988-2054

**NOW AVAILABLE**  
New Storage Units For Rent

**STABLE SELF STORAGE UNITS**

Various sizes available  
Chapel Hill Road, Marion, Kentucky  
**Richard Cruce**  
(270) 965-3633 • Mobile 969-0158

Visit  
**The Crittenden Press Online**  
[www.the-press.com](http://www.the-press.com)

SENIOR DISCOUNTS, Age 60 and over get first month rent free on a 12 month lease and first pet no charge! River Oaks Apartments, Sturgis, monthly \$455 two bedroom and \$355 one bedroom. No deposit with approved background and past rent payment history. (270) 333-2449, section 8 accepted. (tfc-c-ro)

## real estate

House for sale, fixer upper, 711 E. Depot St. (270) 965-1915. (3t-22-p)

## services

Concrete work: parking lots, garages, steel buildings, room additions. Call to save your dollar! (270) 860-0236, Joe Mattingly, Concrete Construction. (12p-31)

Dozer and backhoe work, ponds, clearing, Bluegrass Vinyl and Dozing, Marion, Ky., (270) 965-5803. (tfc)

## employment

Thornton Trucking is seeking experienced diesel mechanics and CDL truck drivers with 2 years experience. Call Mack Thornton (270) 997-1480 and Don Thornton (270) 952-3354. (2t-21-p)

Wanted, full-time, possibly live-in sitter for elderly lady. Very easy job. (270) 704-0022 or (270) 704-2361. (2t-21-p)

The Earle C. Clements Job Corps Academy is seeking employees. We offer a competitive salary and benefits package as well as tuition reimbursement and advancement opportunities. Full-time, part-time, and substitute positions available. MTC is an equal opportunity employer-Minority/Female/Disabled/Veteran. To view current openings and qualifications and to apply, please visit our website: [www.mtcjobs.com](http://www.mtcjobs.com) "Building Tomorrow's Futures Today" (4t-21-p)

## statewide

### ANNOUNCEMENTS

Advertise your JOB OPENING, EVENT, ITEMS FOR SALE, AUCTION etc. in this newspaper plus 85 other newspapers in KY for only \$250. Save time and money by making one call for all! For more information, contact the classified department of this

newspaper or call KPS 1-502-223-8821, email: [sparry@ky-press.com](mailto:sparry@ky-press.com)

**\$4000 CASH!** Newspaper Sponsored - Local Shopping Survey. Enter to win now, go to [www.pulsepoll.com](http://www.pulsepoll.com)

### DATING

Tired of the same old dating sites? Meet real people in your area & make a new connection on your terms! 18+ Only. Call 1-800-782-1539.

### FARM FOR SALE

164 ACRES, Butler County, Kentucky, for sale by owner. Fixer Upper House. Road frontage, 2 barns, timber, 3 lakes. Great for cattle or crops. 270-999-2222

### HELP WANTED

Drive with Uber. No experience is required, but you'll need a Smartphone. It's fun and easy. For more information, call: 1-800-767-0953

### MOBILE HOMES FOR SALE

REPOSSESSED mobile homes. Move in ready. No rent option, but buying could be cheaper than rent! Owner financing on select homes with approved credit. 859-977-3970

### SERVICES

DISH TV - BEST DEAL EVER! \$49.99/mo. Plus \$14.99/mo Inter-

net (where available). FREE Streaming FREE Installation. FREE HD-DVR. 1-800-417-8079.

TRUCK DRIVERS HELP WANTED

APPLY NOW! CDL Drivers in High Demand! Get your CDL Training in 16 days at Truck America Training and go to work! State WIOA Grants and VA Benefits Accepted. Tuition Financing Available if qualified. 1st yr. avg. \$40,000 per ATA (502)955-6388 or (866)244-3644

CLASS A CDL FLATBED DRIVERS, NEW PAY SCALE •NEW 389 Pete's •Trucks set @ 70MPH •Starting pay up to .52 CPM •Health Ins. •401K •Per Diem Pay •Home Weekends. 800-648-9915 or [www.boydandsons.com](http://www.boydandsons.com)

## BELLVILLE MANOR APARTMENTS

819 Terrace Drive • Marion, Kentucky

Accepting applications for one and two bedroom apartments: total electric, newly redecorated, rent based on your income to qualifying person.

DISABLED • NEAR ELDERLY • ELDERLY • FAMILY

OFFICE HOURS: 9:00 a.m. to 4:00 p.m.

Tuesday & Thursday


Phone (270) 965-5960

TDD: 711

SECTION 8 HOUSING



**NOTICE!**



We will be  
**CLOSED**  
Thursday,  
Nov. 24  
In Observance  
Of  
*Thanksgiving*  
Day

• FARMERS BANK  
[www.farmersbankmarion.com](http://www.farmersbankmarion.com)

• FREDONIA VALLEY BANK  
[www.fredoniavalleybank.com](http://www.fredoniavalleybank.com)

**RN, LPN & CNA OPPORTUNITIES**

**Crittenden County Health & Rehabilitation Center**

Crittenden County Health & Rehabilitation Center, a skilled nursing facility, has an immediate full time opportunities for an experienced RNs, LPNs and CNAs at our long term care and rehabilitation facility.

Qualified candidates for these positions must be licensed or certified in Kentucky, have knowledge of federal and state regulations, possess strong leadership and team-building skills, and have a desire to make a difference in the lives of our residents.

**\$4,000 Sign-On Bonus for Full-Time RN or LN**  
Also hiring a Full-Time Staff Development RN Position

We provide excellent compensation and benefit package based on experience.

Not certified as a CNA? We offer free training to become a certified Nursing Assistant. This could launch a career for you in healthcare. Talk to us now!

Please email your resume and salary requirements to: [cccc-don@atriumlivingcenters.com](mailto:cccc-don@atriumlivingcenters.com) or send this information to the attention of the Director of Nursing at Crittenden County Health & Rehabilitation Center, 201 Watson Street, Marion, Ky. 42064 or fax to (270) 965-4433 or you can call us at (270) 965-2218. You may also stop by the facility between the hours of 9 a.m. and 5 p.m. and complete an application.

**Atrium Centers, LLC**  
**Crittenden County Health & Rehabilitation Center**  
201 Watson Street • Marion, Ky. • (270) 965-2218

We are an Equal Opportunity Employer that Values Diversity in the Workplace. We are also please to advise you that for the safety of our residents and employees, we are a drug free work place.

**IMMEDIATE PRODUCTION POSITIONS IN PRINCETON, KY**



**Ready to Work**

'Tis the season to get the job you really want

**apply.smjobs.com**

JOB CODE: 7596A | 715-748-8986

**APPLY & JOIN OUR GROWING TEAM NOW HIRING PRODUCTION ASSOCIATES**

We are looking for great people like you, to join our team in Princeton, KY. We have various production positions within our facility with room for growth.

**STARTING PAY \$11.20 PER HR**



- Temp-to-hire positions
- All shifts available
- Weekly paychecks
- \$25 referral bonus program after they work 30 days
- Casual dress environment
- Great team

**staff management | smx**

a TRUEBLUE company

**#SMXJOBSNOW**



FOOTBALL

Livingston football update

About 60 students and parents met last week and have decided to continue investigating the possibility of football at Livingston Central High School. There will be a district wide meeting in early January that will include middle and elementary school students and parents. If the proposal is approved, LCHS would have to play a JV schedule for two years before offering varsity football.

OUTDOORS

Hunting seasons

Deer Archery	Sept. 3 - Jan. 16
Turkey Archery	Sept. 3 - Jan. 16
Raccoon Hunting	Oct. 1 - Feb. 28
Crossbow Turkey	Nov. 12 - Dec. 31
Crossbow Deer	Nov. 12 - Dec. 31
Squirrel	Nov. 14 - Feb. 28
Fox Hunt/Trap	Nov. 14 - Feb. 28
Rifle Deer	Nov. 12 - Nov. 27
Rabbit, Quail	Nov. 14 - Feb. 10
Woodcock	Nov. 14 - Dec. 7
Raccoon Trapping	Nov. 14 - Feb. 28
Bobcat	Nov. 26 - Feb. 28
Dove	Nov. 24 - Dec. 4
Duck	Nov. 24-27
Canada Goose	Nov. 24 - Feb. 15
Snow Goose	Nov. 24 - Feb. 15
Turkey gun	Dec. 3-9
Dove	Dec. 17 - Jan. 8
Duck	Dec. 5 - Jan. 29
Muzzleloader	Dec. 10 - Dec. 18
Deer Late Youth	Dec. 31 - Jan. 1
Crow	Jan. 4 - Feb. 28
Coyote Night	Feb. 1 - May 31
Youth Waterfowl	Feb. 4-5
Goose Conservation	Feb. 16 - March 31
Coyote	Year Round
Groundhog	Year Round



Skylar Padon, 8, bagged his first buck on opening day in Livingston County.



Chad Perryman tagged this non-typical 10-point buck with a bow the weekend before rifle season.



Seth Blackburn, 11, bagged this 8-pointer with a 20-inch spread.



Dave Padgett bagged this 12-point buck on Nov. 12.



Alumni rematch Saturday at Rocket Arena

Eighty-five men and women have committed to playing basketball Saturday night in the rematch of the Crittenden County vs. Livingston Central Alumni Basketball Series. The teams played last year at Smithland in front of a sellout crowd and this year Rocket Arena will host the games. Some all-time greats have signed on to play this time, including former collegiate basketball players Ronnie Moss and Greg Thurman, who graduated in 1987

from CCHS and played Division I basketball at North Carolina - Asheville and Belmont in Nashville. Some favorites from the 1970s will be suited up again including Shawn Stinnett, Bennett Smith and Jimmy Croft. Kyle Myers and a few of his teammates who won the district championship in 1998 will be on the floor for the Rockets. Several players from the best Lady Rocket teams in history are signed up, including 2011 Sweet 16 participants Jessi

Hodge Sigler, Summer Courtney Riley, Laken Tabor and Whitney Johnson Bruce. Teresa Fox Bebout, a regional finalist from the 1970s, and former Murray State player and coach Vanessa Gray will be on the floor for Crittenden. Tickets are available at the door for \$5. The first game starts at 5 p.m. There will be games by gender and age division throughout the evening. Former cheerleaders and band members will also be participating.

Dempsey scores big when weather changes

When the weather finally cooled down last weekend, hunters found renewed activity from white-tails. Chase Dempsey of Marion bagged a monster buck Saturday morning in Crittenden County. It grossed around 171 on the Boone and Crockett measurement system and was aged at 3½ years old. The 12-point buck is one of the bigger ones taken in the county so far. Hunters spent the first week of rifle season in shorts and T shirts with temperatures soaring near 80 on a few days. The first taste of 20-degree weather last weekend seems to have gotten the big ones moving. Now that fall weather has set in, gunners are eager for a long and productive Thanksgiving holiday weekend. The rifle deer season ends on Sunday, but that is not by any means the last chance to harvest a deer. There will be a nine-day late muzzleloader season starting Dec. 10 and crossbow and archery equipment are legal weapons until Dec. 31 and Jan. 16, respectively.



Final Deer Days Ahead



By the Numbers

County	Male	Female	Total	Archery	Firearm	Muzz'lder	Crossbow
Crittenden	1,205	1,037	2,242	373	1,759	59	51
Livingston	682	564	1,246	174	999	57	16
Webster	827	911	1,738	291	1,349	43	55
Union	443	374	817	251	534	19	13
Caldwell	758	522	1,280	170	1,046	40	24
Lyon	382	232	614	118	471	15	10

TOP HARVEST COUNTIES IN KENTUCKY			
Pendleton	2,439	Owen	2,324
Breckinridge	2,261	Crittenden	2,242

10 YEARS Crittenden Harvests	
2006	3,085
2007	2,927
2008	2,707
2009	2,549
2010	2,952
2011	2,829
2012	3,010
2013	3,033
2014	3,224
2015	3,359



CCMS eighth-grader Chandler Moss (above) takes the ball from a St. Ann's player during action Friday night and (at left) Kacie Easley guards a Livingston ball-handler in other action last week.

Middle School Basketball Results

Here are Crittenden County Middle School's basketball results from games played over the past week:

7TH GRADE BOYS	
Caldwell 54, Crittenden 11	Crittenden Scoring: Ben Evans 4, Maddox Carlson 3, Tucker Sharp 2, Peyton Purvis 2.
8TH GRADE BOYS	
Crittenden 44, St. Ann 15	Scoring: Crittenden: Gabe Mott 12, Trace Adams 8, Braxton Winders 4, Tyler Boone 5, Preston Turley 9, Jasper Morrison 8.
Crittenden 60, Caldwell 38	Crittenden Scoring: Mott 17, Adams 4, Winders 8, Boone 5, Turley 16, Caden McCalister 4, Morrison 4, Xander Tabor 2.

7TH GRADE GIRLS	
Crittenden 39, Livingston 12	Crittenden Scoring: Macie Hunt 8, Riley Smith 2, Raylee Belt 2, Taylor Guess 11, Natalie Boone 2, Grace Driskill 10, Addie Hatfield 4. Livingston: Victoria Joiner 2, Maggie Downey 4, Bella Chittenden 1, Calista Jennings 5.
8TH GRADE GIRLS	
Crittenden 40, Livingston 20	Crittenden Scoring: Chandler Moss 12, Matthias Long 2, Nahla Woodward 8, Jaelyn Duncan 9, Lilly Perryman 2, Kacie Easley 4, Destiny Knight 2, Grace Driskill 2. Livingston: Lauren Wring 11, Kennedy Croft 5, Colista Jennings 4.
St. Ann 41, Crittenden 30	Crittenden Scoring: Moss 4, Long 1, Woodward 4, Duncan 14, Taylor Guess 6.



Pictured are Tumble Extreme award winners from a recent competition. They are (front from left) Nora Hollis, Molleigh Crumpton, (second row) Alivia Caudill, Rianna Maness, Aubry Hollis, (third row) Georgia Holeman, Mary Perryman, Payton Maness, Ames Heady, (back) Belle Minton, Sissy Collins and Riley Summers.

Gymnastics competition winners

Following are results from Tumble Extreme's gymnastics competition at Clarksville the last weekend in October.

Competitor	Tumbling	D-Mini	Trampoline
Alivia Caudill	2nd	1st	3rd
Sissy Collins	2nd	1st	-
Molleigh Crumpton	1st	4th	3rd
Ames Heady	3rd	5th	5th
Georgia Holeman	5th	6th	6th
Aubrey Hollis	1st	1st	1st
Nora Hollis	-	1st	1st
Payton Maness	1st	1st	4th
Rianna Maness	4th	2nd	2nd
Belle Minton	-	2nd	3rd
Mary Perryman	2nd	1st	2nd
Riley Summers	3rd	2nd	1st

Wishing Our Seniors A Successful Season.

Rocket BASKETBALL

Lady Rocket BASKETBALL

Talley, Susan, and Reese

MOMENTS IN TIME PHOTOGRAPHY

800-215-1853 or photos@reesebaker.us

ONE HOOP AT A TIME

www.MomentsInTime.Pictures

Follow the Rockets Online at **The-Press.Com** Sports  
Find online extras : Photos, Stats, Video, Podcasts, More